



***CFD modelling of
buoyancy-driven
natural ventilation***

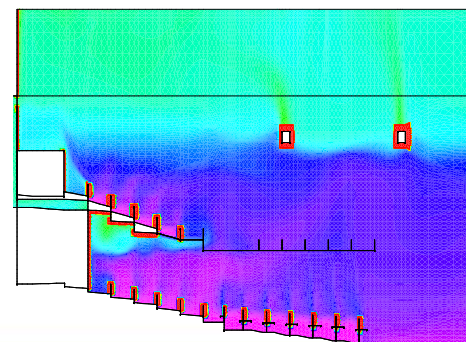
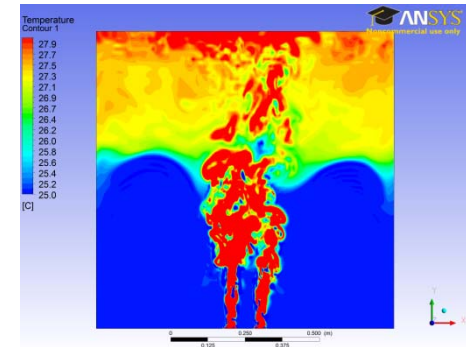
**CIBSE Natural Ventilation and
Building Simulation groups
30th April 2014**

**Malcolm Cook
School of Civil and Building Engineering
Loughborough University, UK**

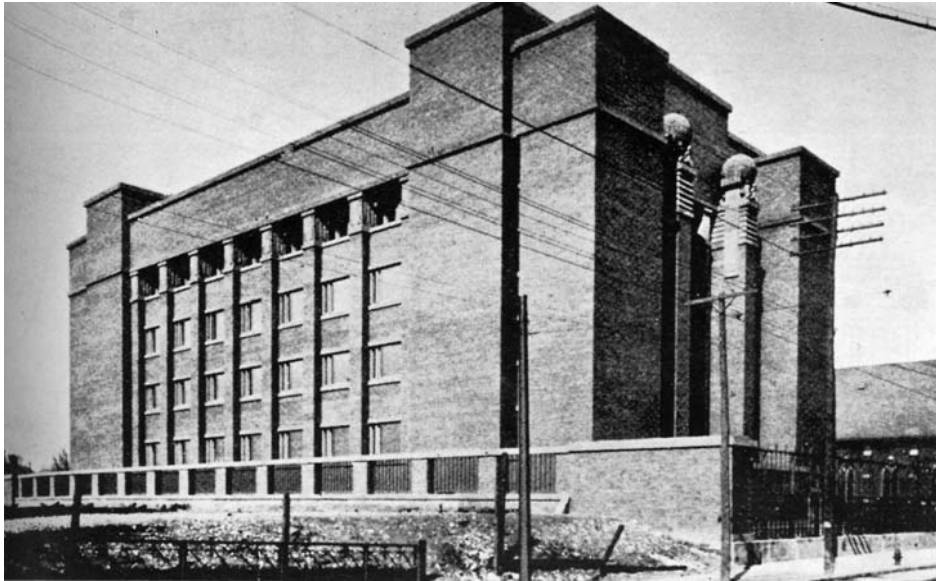
Contributions from Dr Faisal Durrani

Content

- Why model?
- Background: early work
- Plume interactions (Benchmark 1)
 - LES and RANS
- Solution multiplicity (Benchmark 2)
 - LES and URANS
- Findings and Guidelines
- Full scale application



Why model natural ventilation ?



Larkin Administration Building in Buffalo, NY, USA

“The Larkin administration building was a simple cliff of brick hermetically sealed ... to keep the interior space clear of the poisonous gases in the smoke from the New York Central trains that puffed along beside it”

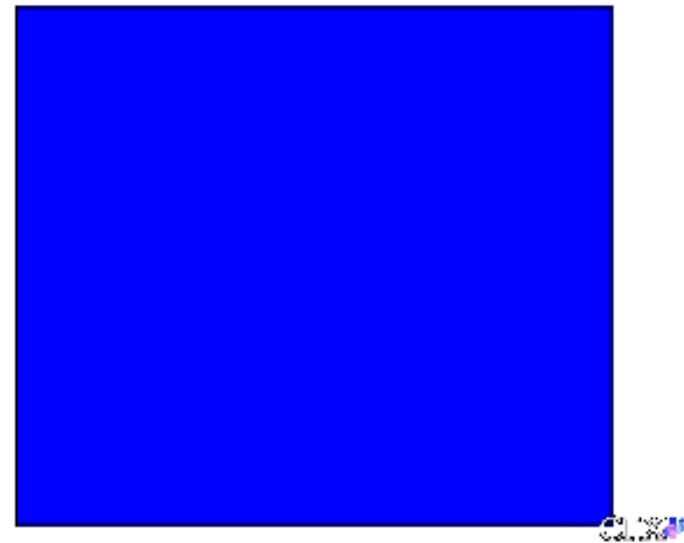
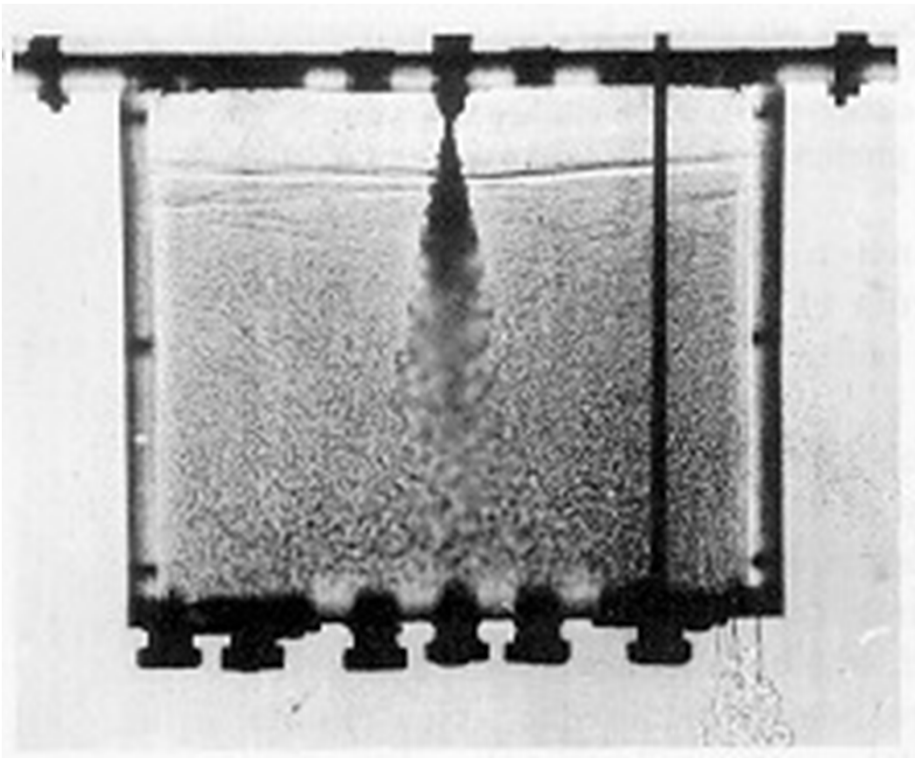
F. L. Wright (1943)



The Queens Building, De Montfort University, UK

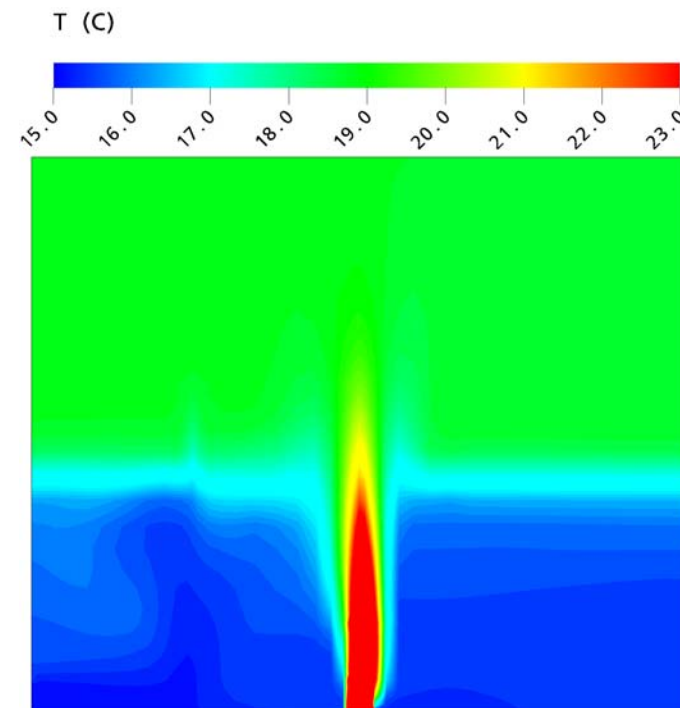
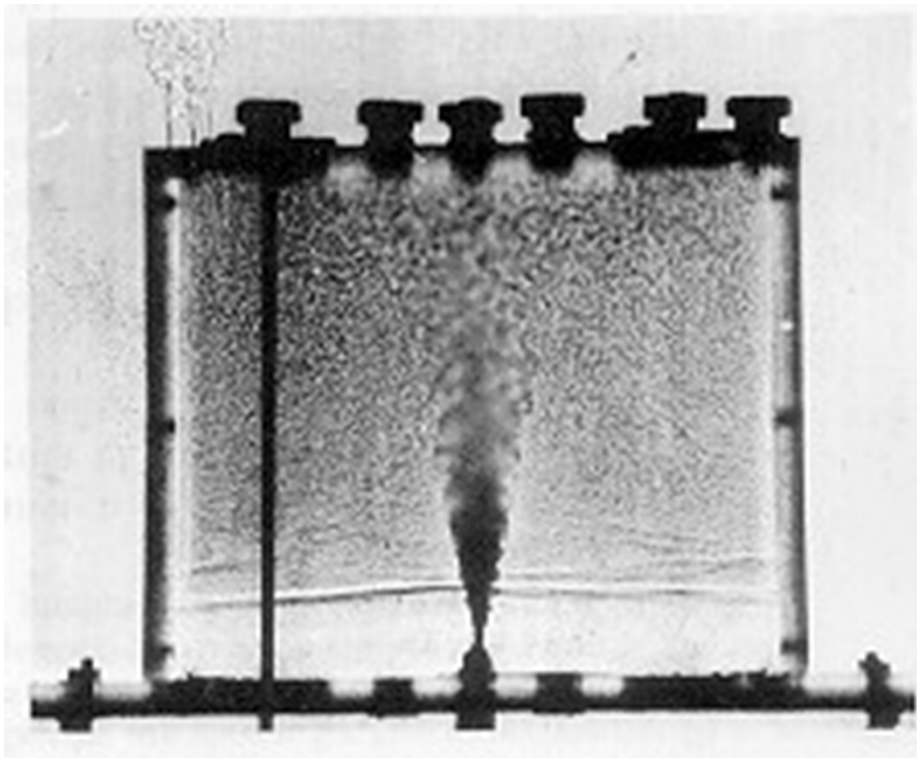
→ **AIRFLOW MODELLING**

Background: early work



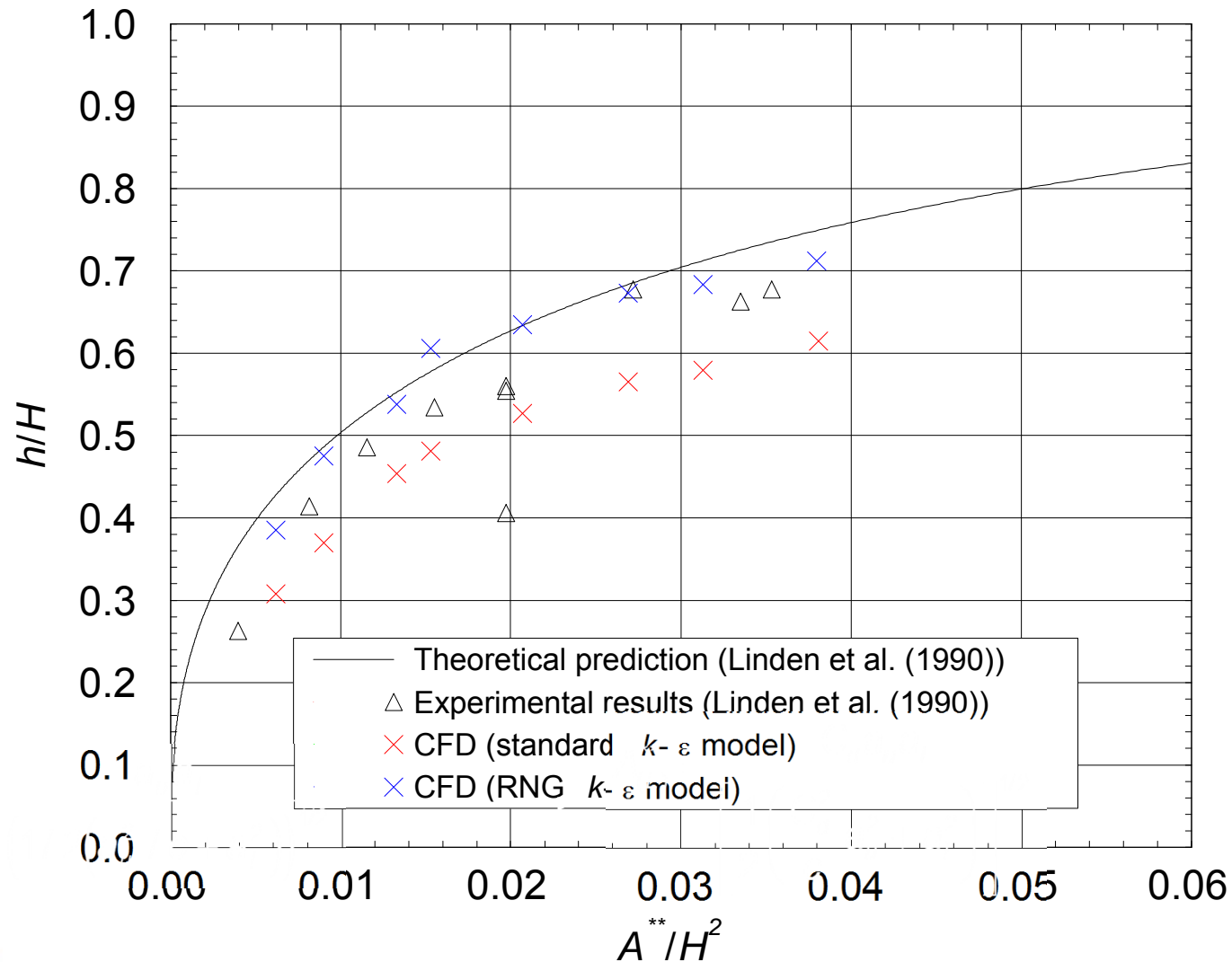
Emptying Filling Boxes: *Cambridge Work (Linden et al.)*

Background: early work

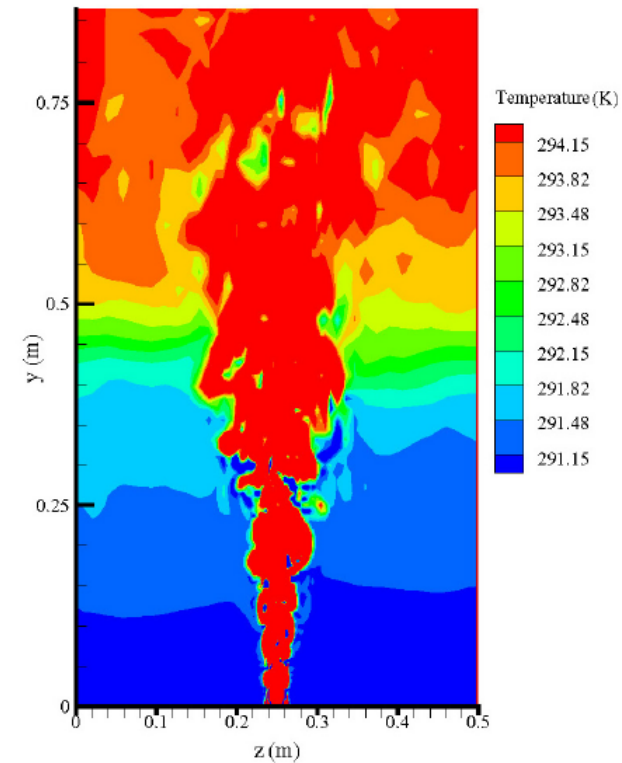
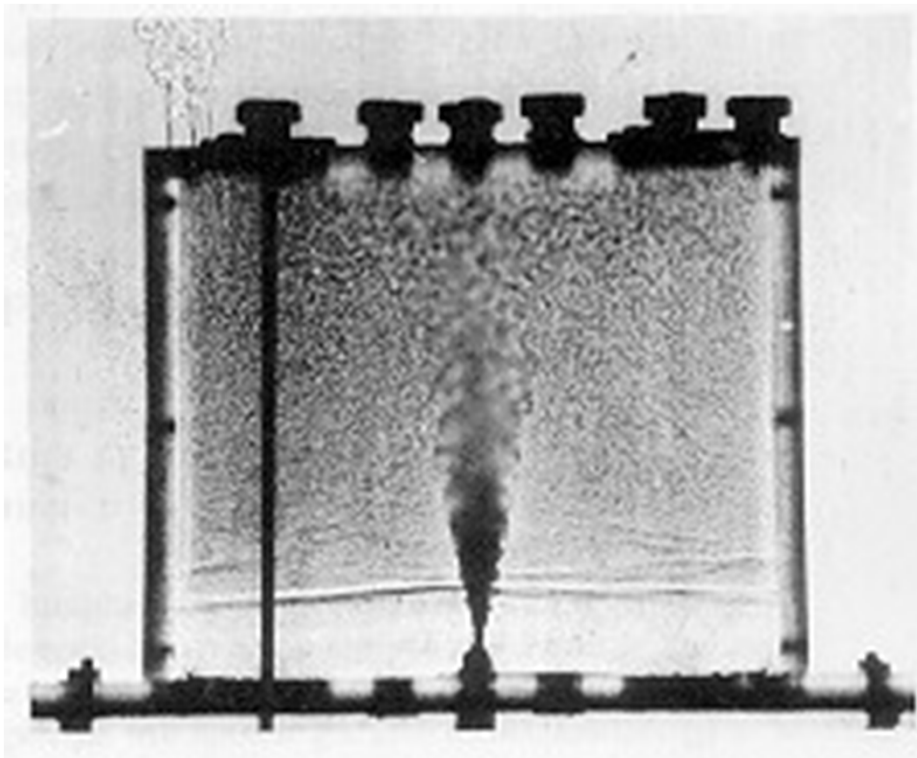


Emptying Filling Boxes: Cambridge Work (Linden et al.)

Background: Emptying Filling Boxes: *Interface Properties*



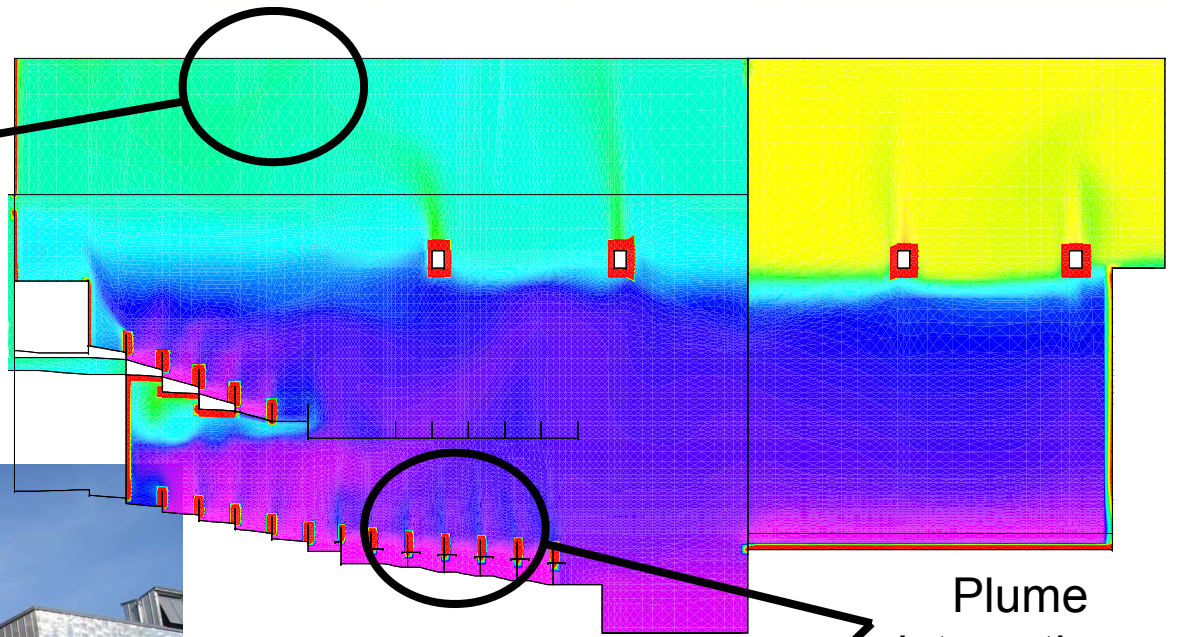
Background: The potential of LES



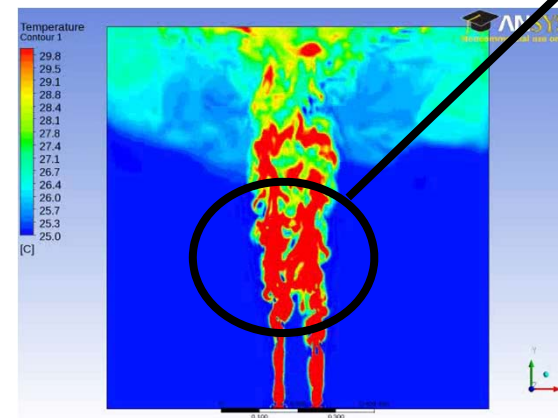
Engineering Applications of CFD:
Abdalla, Cook and Hunt

Background ~ Transients and solution multiplicity

Large openings

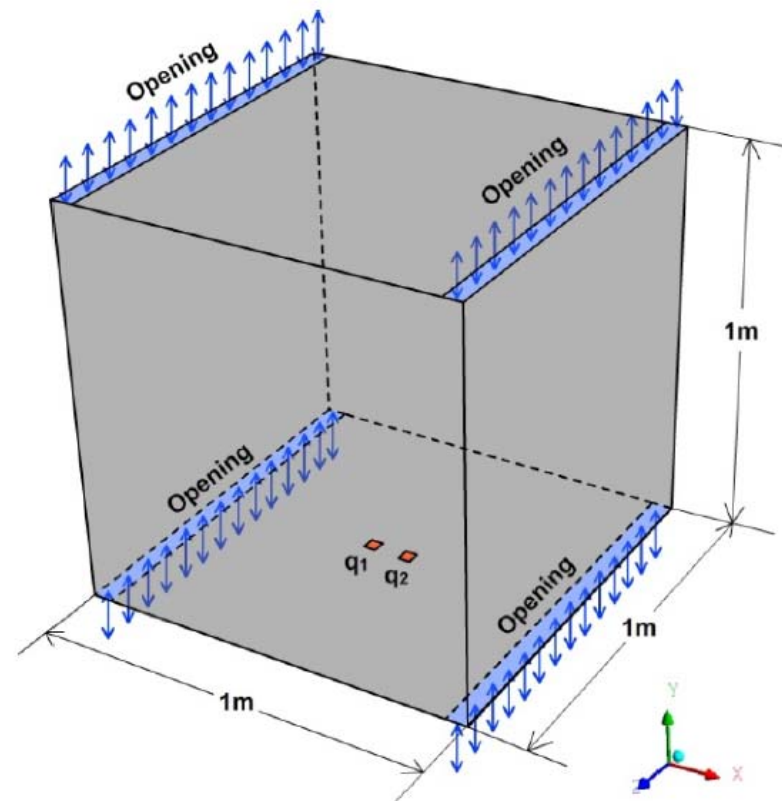


Plume interactions



Benchmark 1 (Plume Interactions)

- Experimental validation:
 - Kaye and Linden (2004)



Numerical Parameters and Opening Boundary Conditions (RANS)

- Ansys
 - Finite volume method
 - Structured mesh
 - RNG k- ϵ model
 - Buossinesq approx.

- Openings (Air = 25°C)

- Outflows:

$$p_{opening} = p_{ref} + \frac{1}{2} f \rho U_n^2$$

- Inflows:

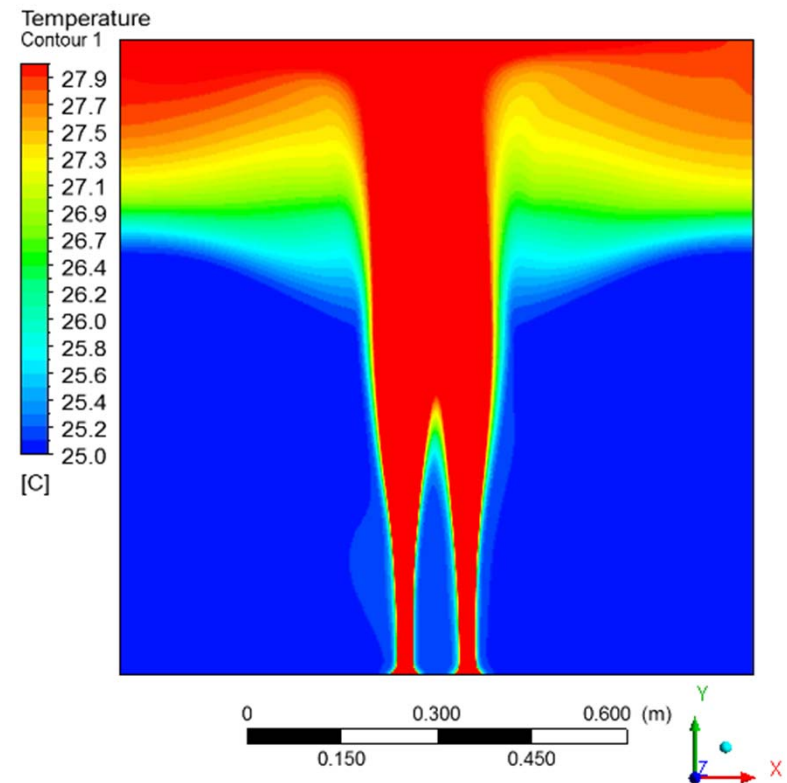
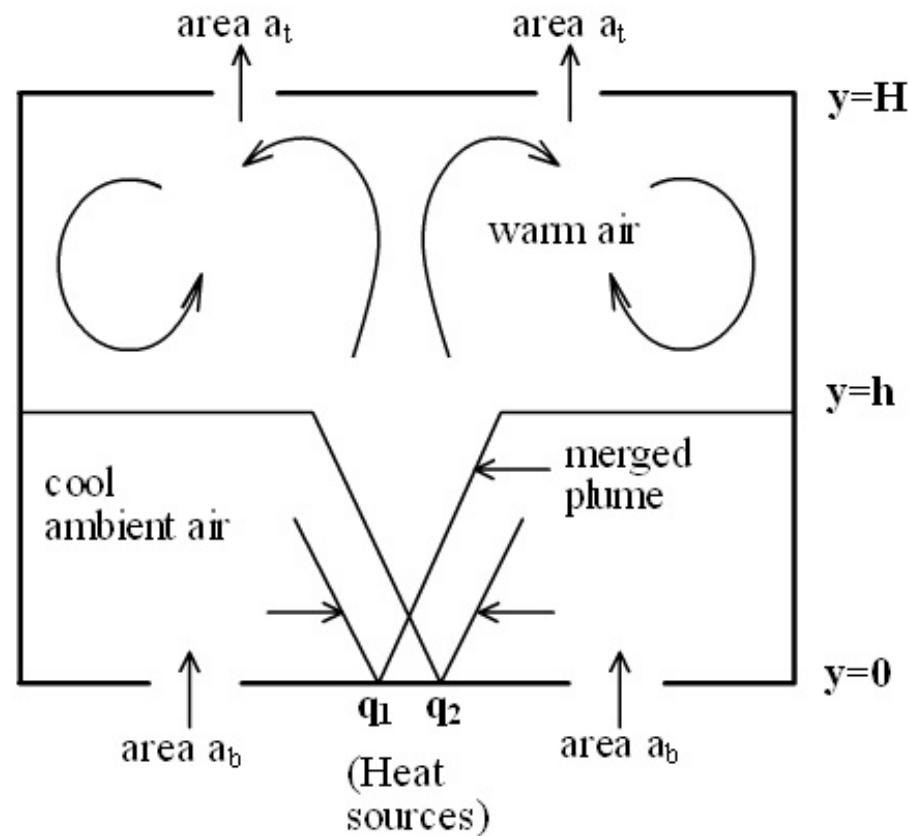
$$p_{opening} = p_{ref} - \frac{1}{2} f \rho U_n^2$$

- where

$$p_{ref} = 0 \text{ Pa}$$

- Heat flux: 20W and 10W

Benchmark 1 Results: Temperature Field (RANS)



Kaye and Linden (2004)

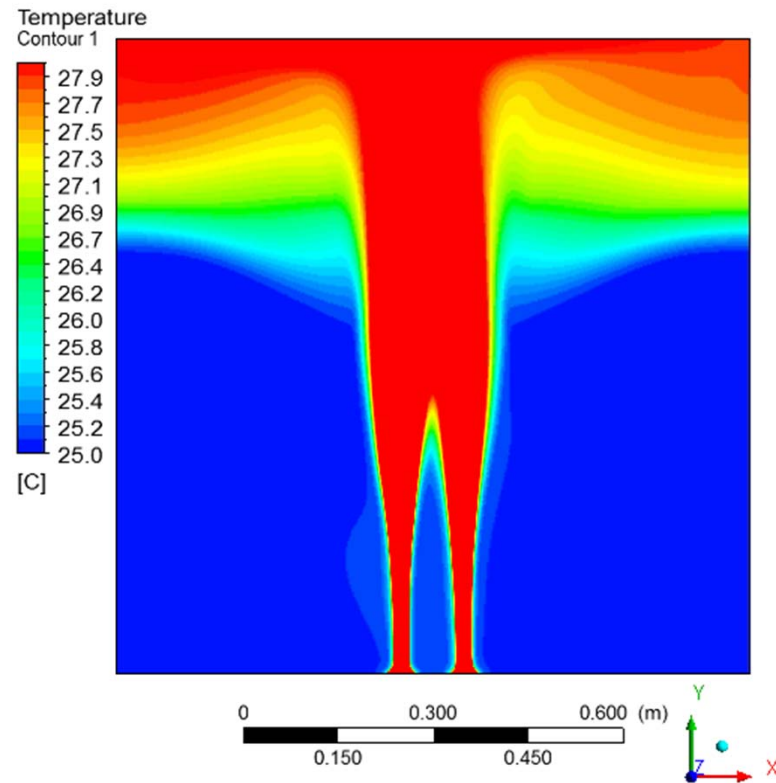
Numerical Parameters (LES)

- LES Model: LES Smagorinsky

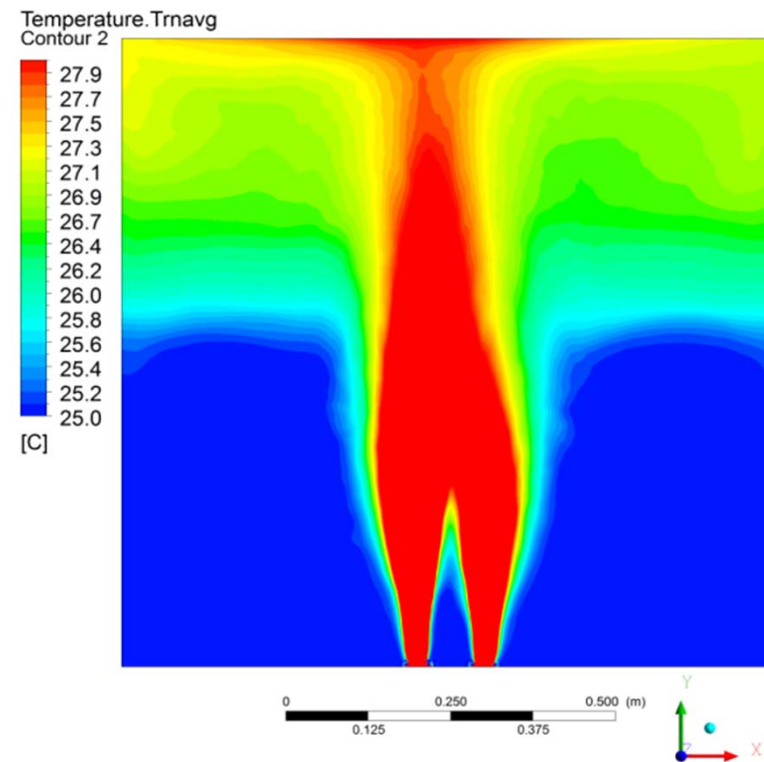
$$CFL = \frac{u \times \Delta t}{\Delta x}$$

- Time steps:
 - Adaptive (initially) based on RMS Courant number
 - Constant (once RMS CFL number within acceptable range)
- Target RMS Courant Number: 0.5 (constant)
 - Running averages and FFT analysis
- Target conservation residuals: 1E-06

Benchmark 1: RANS vs LES (averaged)

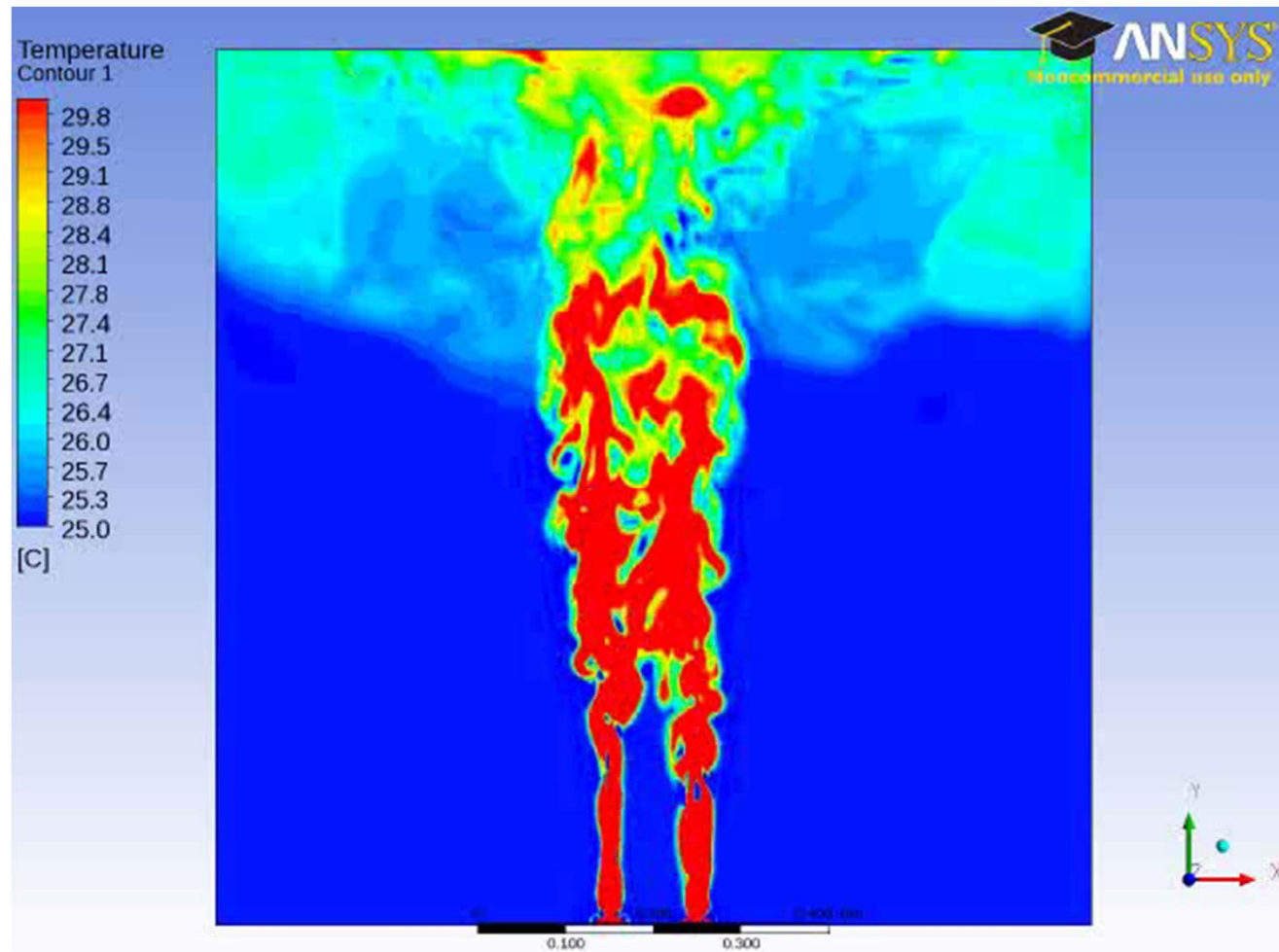


RANS

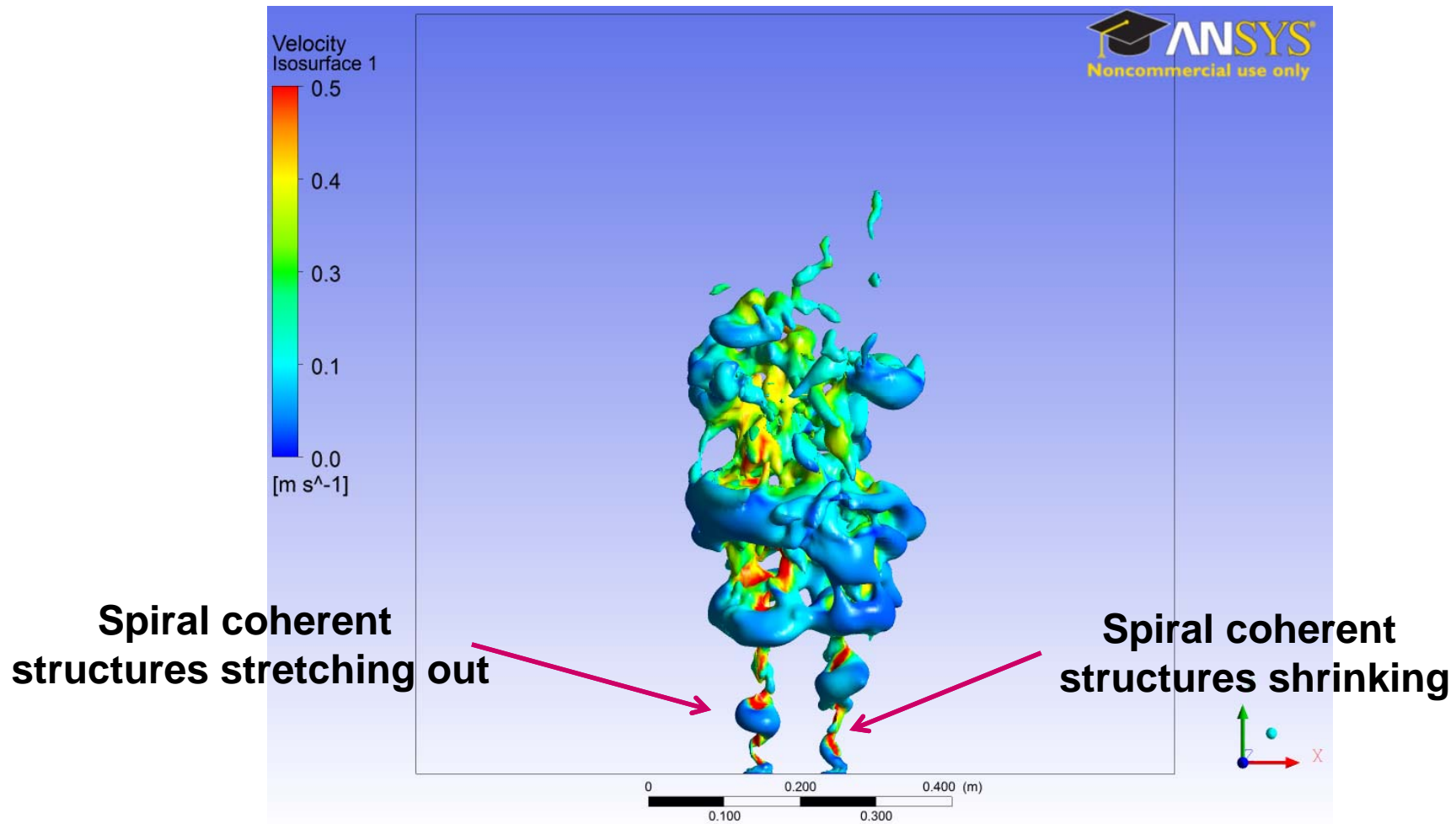


LES

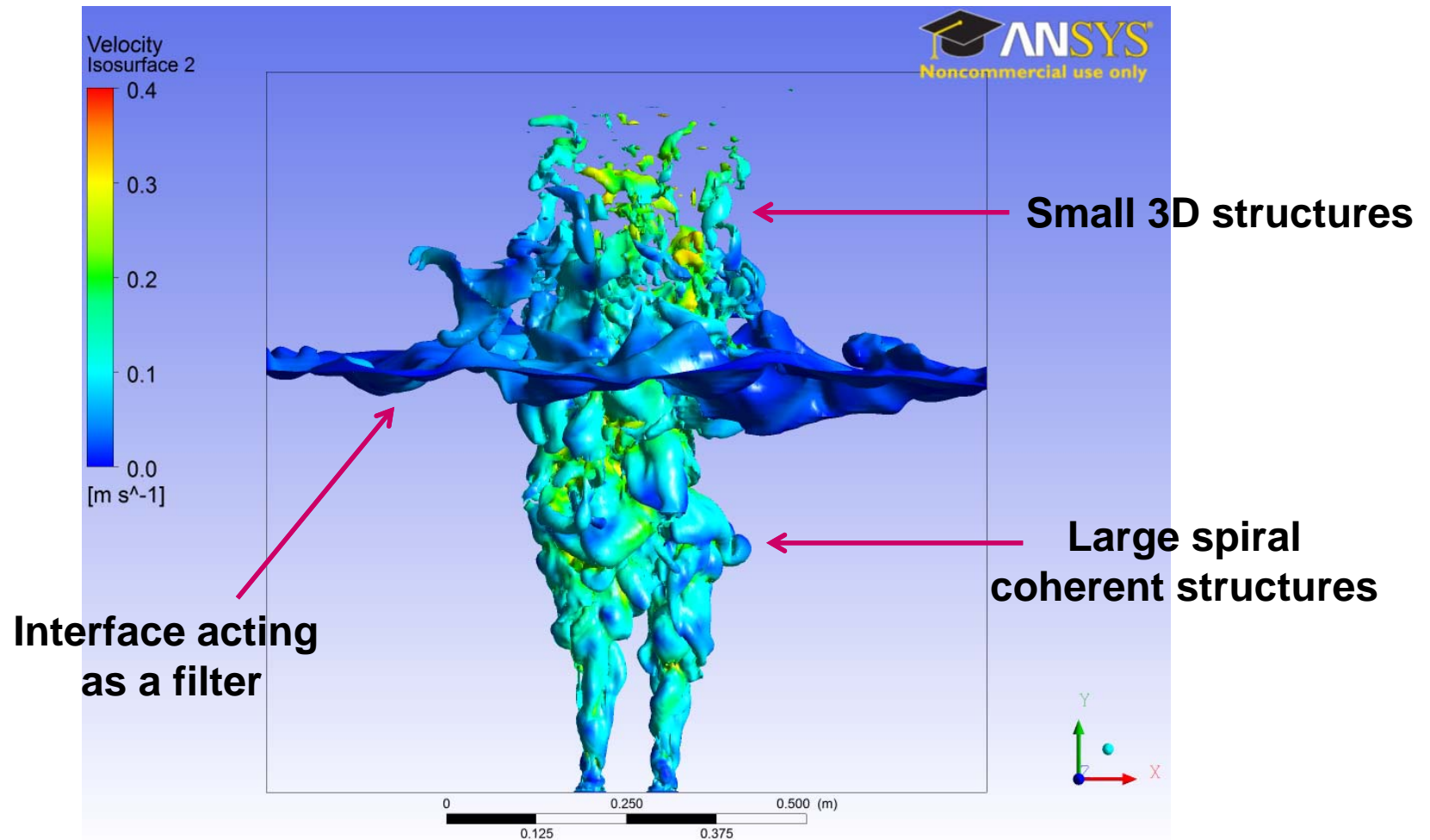
Benchmark 1: Evolution of the interface using LES



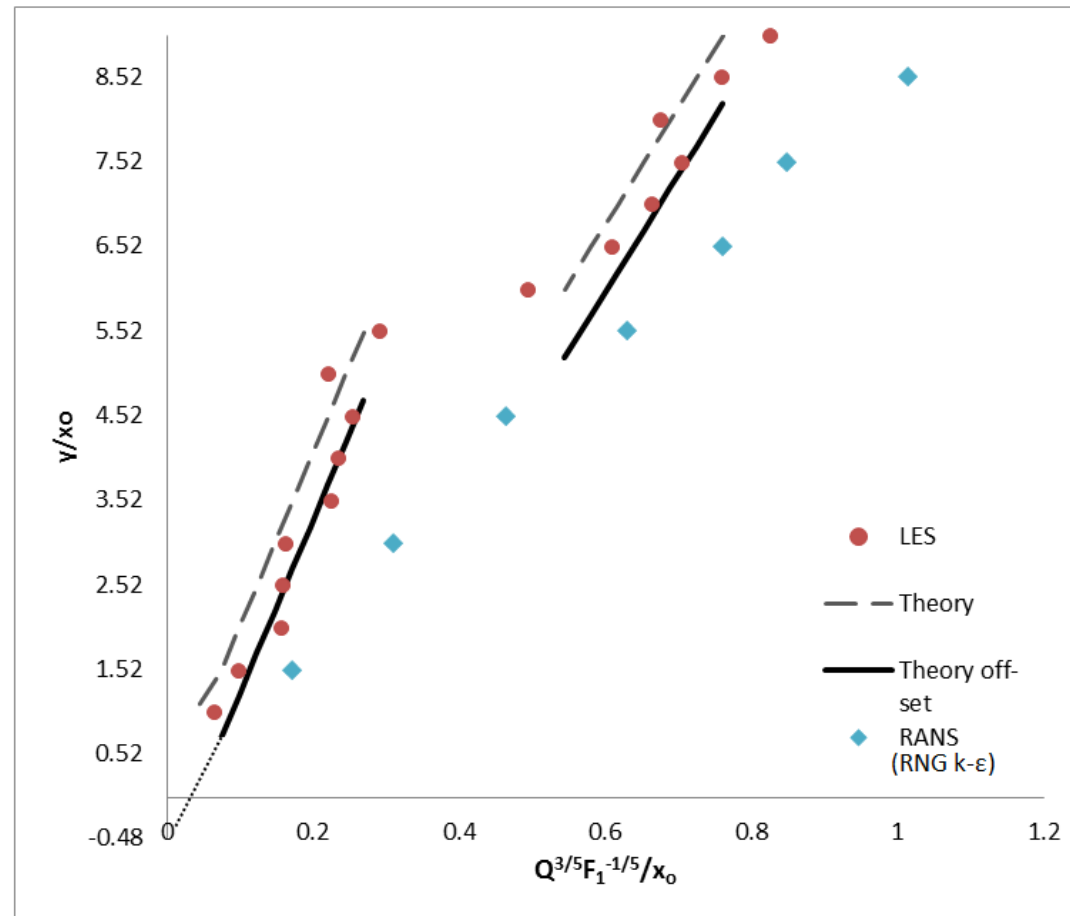
Benchmark 1: Low pressure isosurface



Benchmark 1: Temperature isosurface

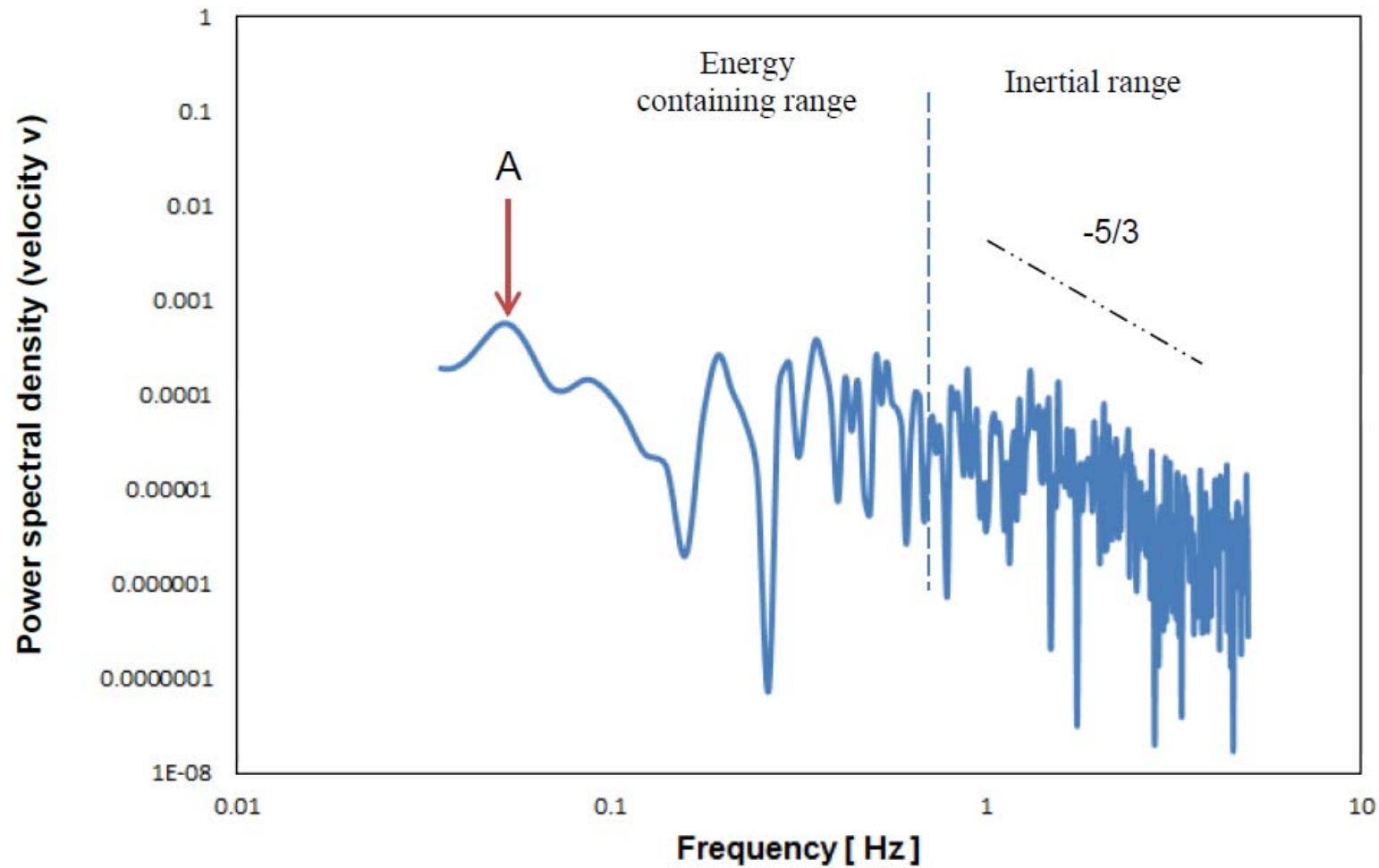


Benchmark 1: Quantitative Results (LES)



Variation of plume flow rates with height above the heat source

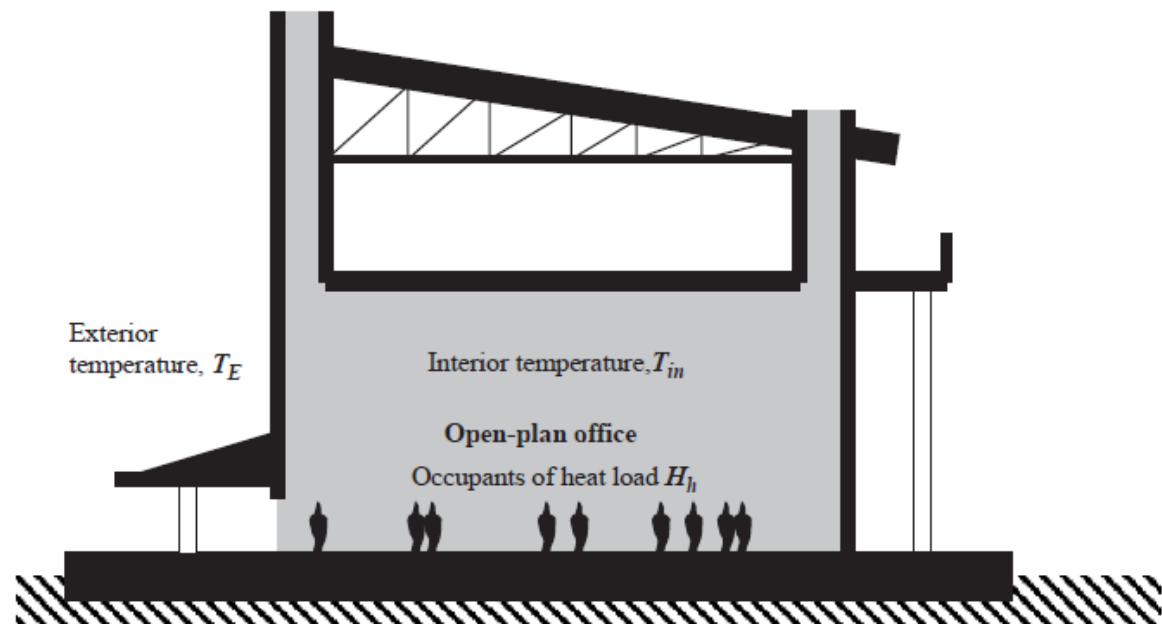
Benchmark 1: Quantitative Results (LES)



Benchmark 2: Solution Multiplicity

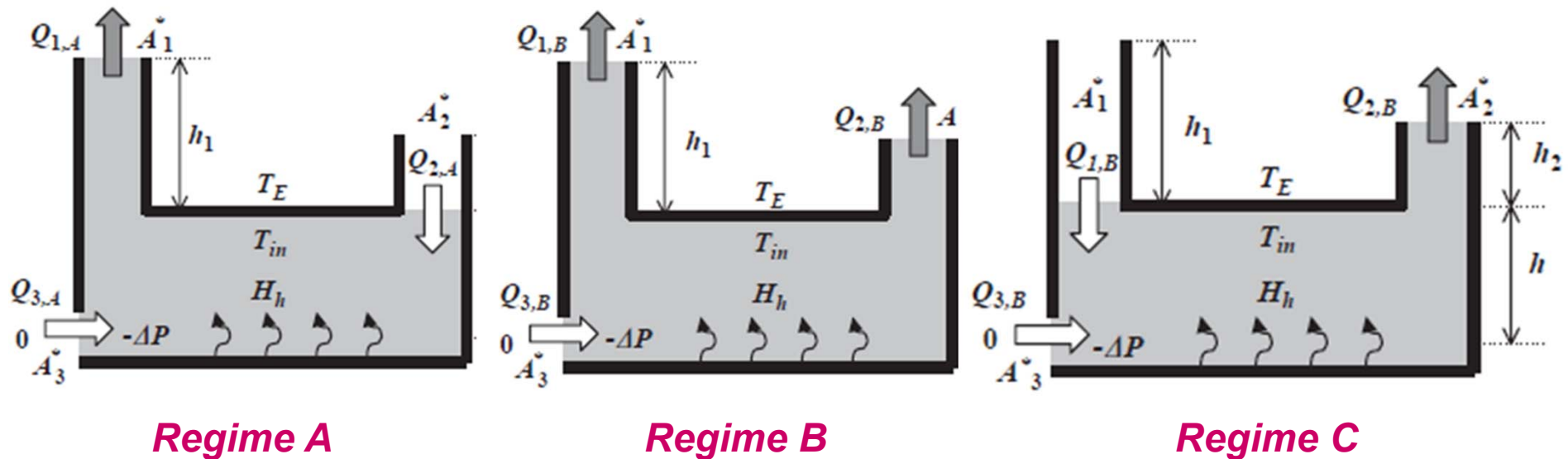
Aim:

To evaluate the performance of LES and URANS for predicting multiple steady-states in naturally ventilated enclosures



Chenvidyakarn and Woods (2005)

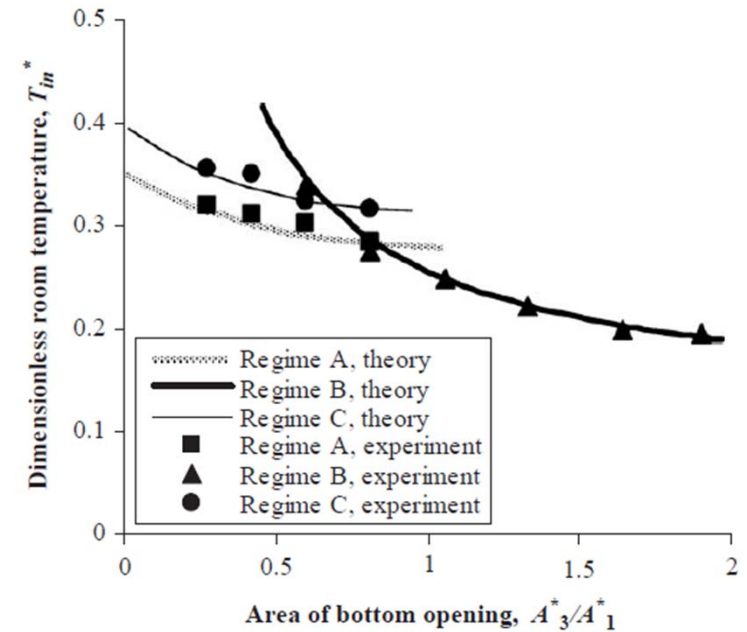
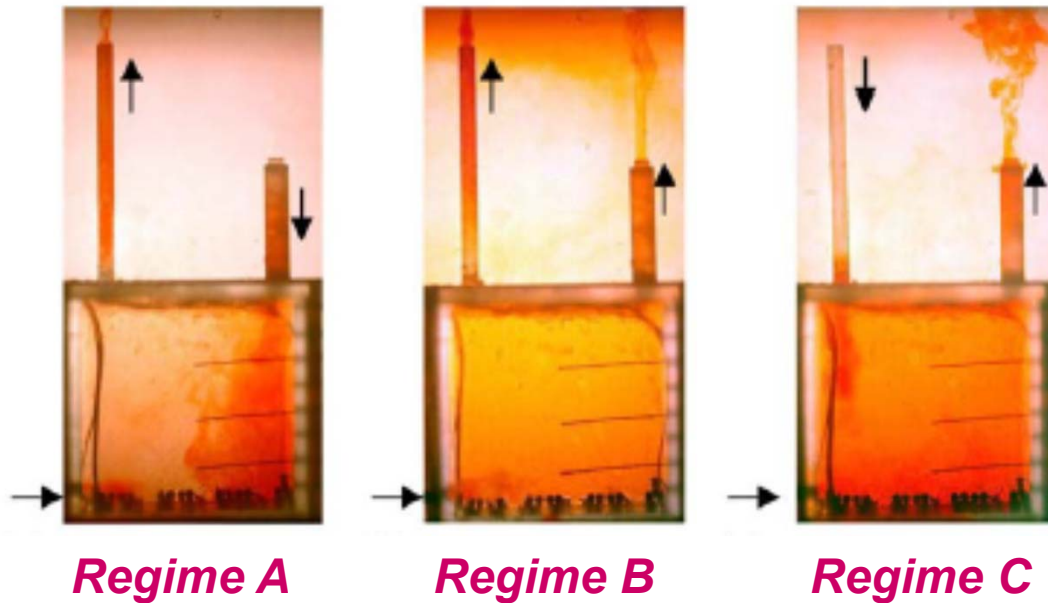
Benchmark 2: Solution Multiplicity



*Three steady state ventilation regimes in an open plan office building
(after Chenvidyakarn and Woods, 2005)*

- Regime depends on:
 - Geometry of the enclosure
 - Flow history

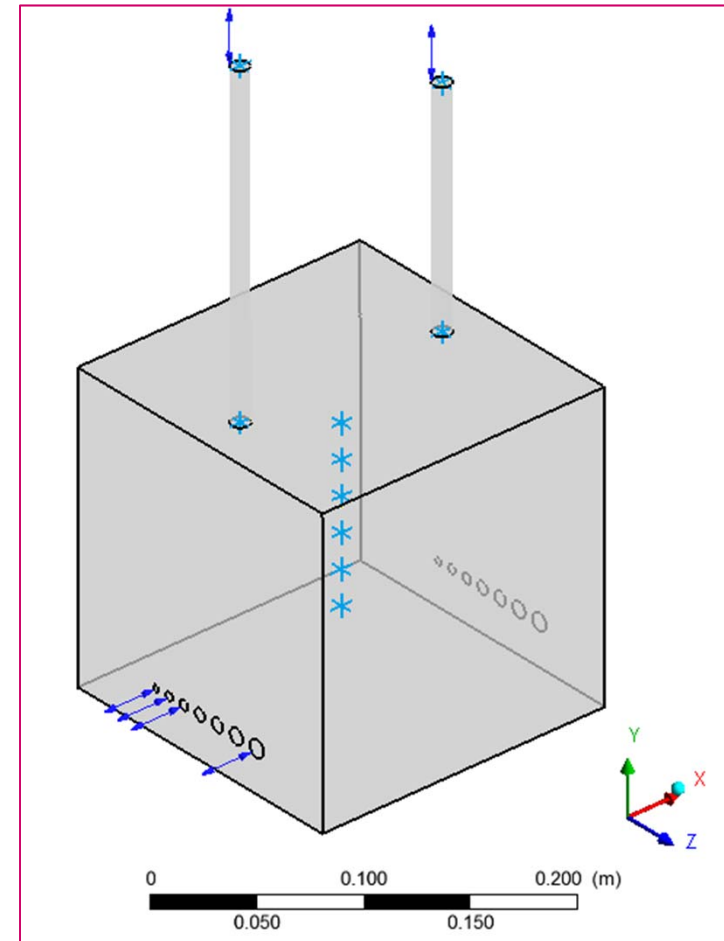
Benchmark 2: Experimental Models



**Three steady state ventilation regimes reported
(after Chenvidyakarn and Woods, 2005)**

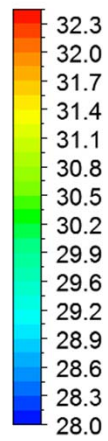
Benchmark 2: CFD Model

- Identical geometry: 17.5cm x 17.5cm x 17.5cm
- Identical fluid: water at 23C
- Boundary conditions
 - Floor: 90W
 - All inlets and outlets: $\Delta p_{loss} = -\frac{1}{2}f\rho U_n^2$
- URANS turbulence model: RNG $k-\varepsilon$
- LES sub-grid model: Smagorinsky
- Mesh sizes:
 - URANS: 1.6M
 - LES: 27M
- **Initial conditions:** ambient air introduced through stacks for 30s

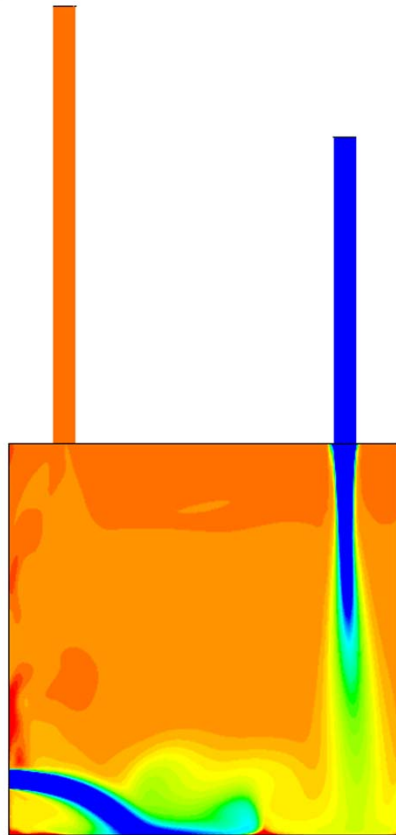


Benchmark 2 Results: *Regime A*

Temperature Contour 1

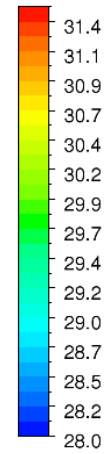


[C]

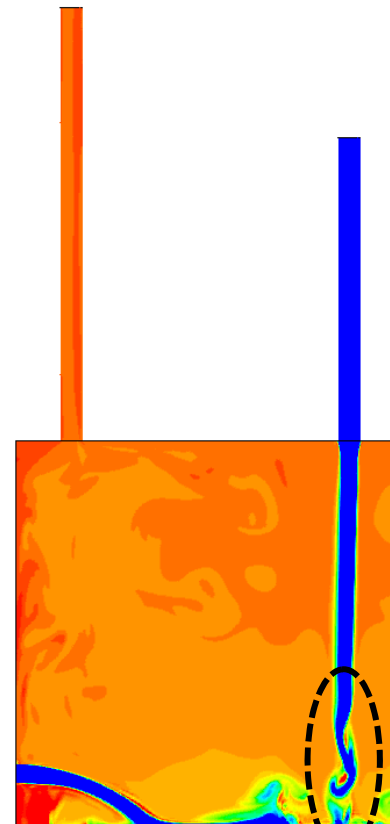


URANS

Temperature Contour 1



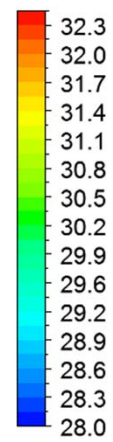
[C]



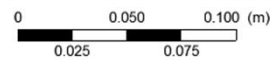
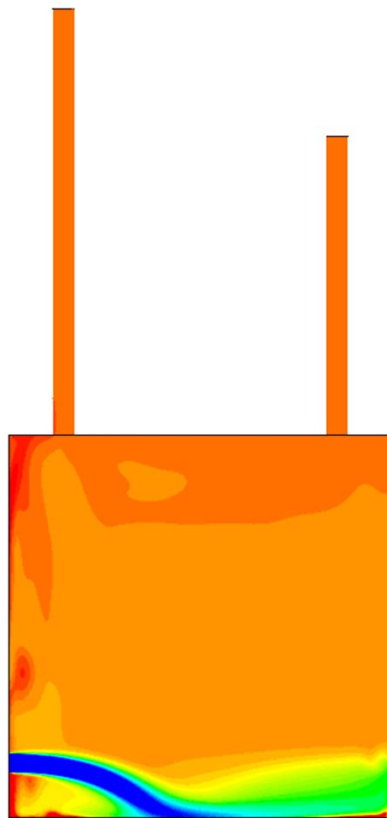
LES

Benchmark 2 Results: *Regime B*

Temperature Contour 1

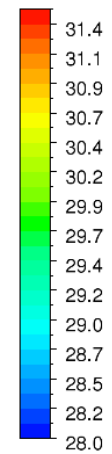


[C]



URANS

Temperature Contour 1



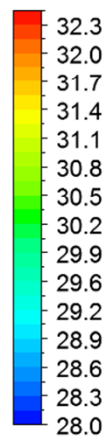
[C]



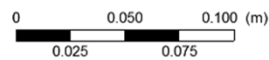
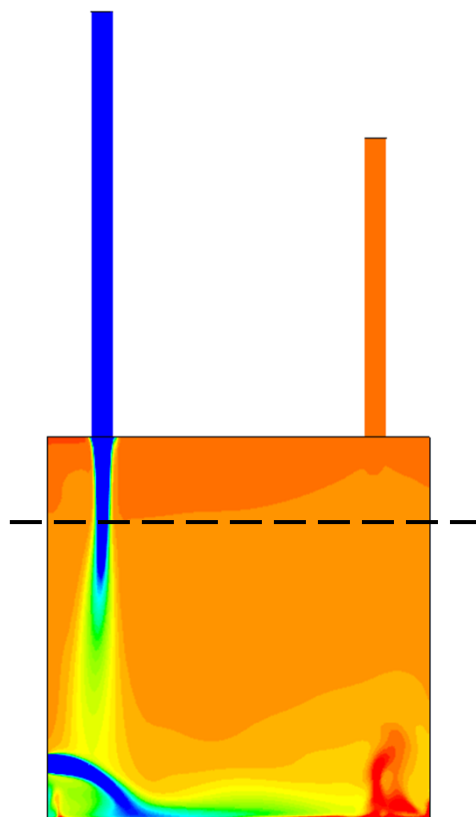
LES

Benchmark 2 Results: *Regime C*

Temperature Contour 1

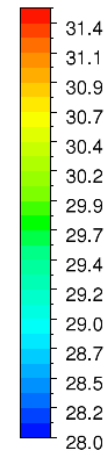


[C]

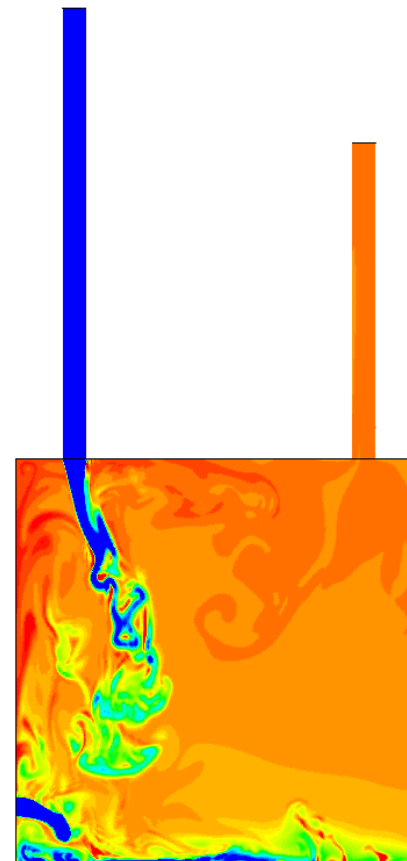


URANS

Temperature Contour 1



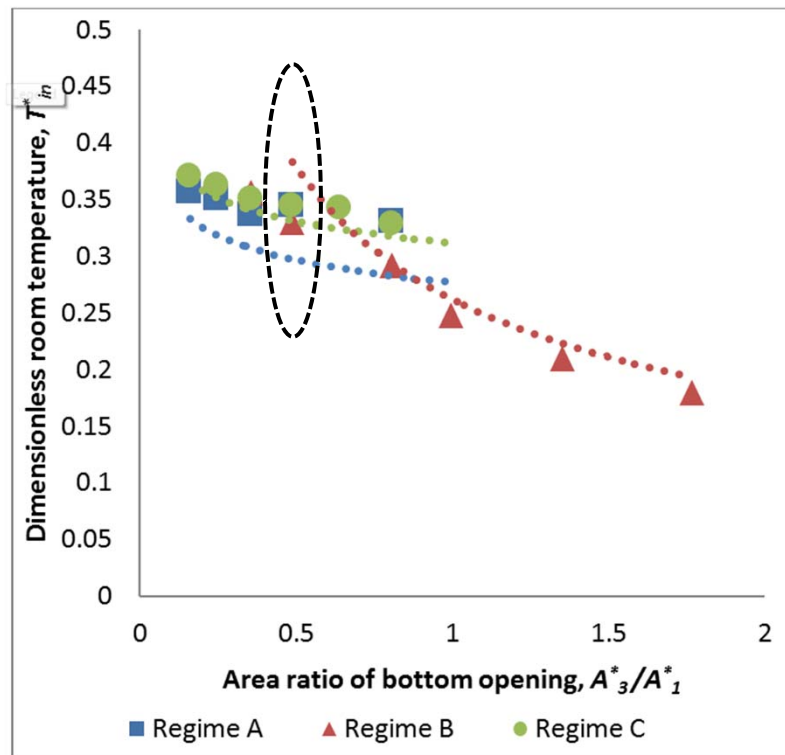
[C]



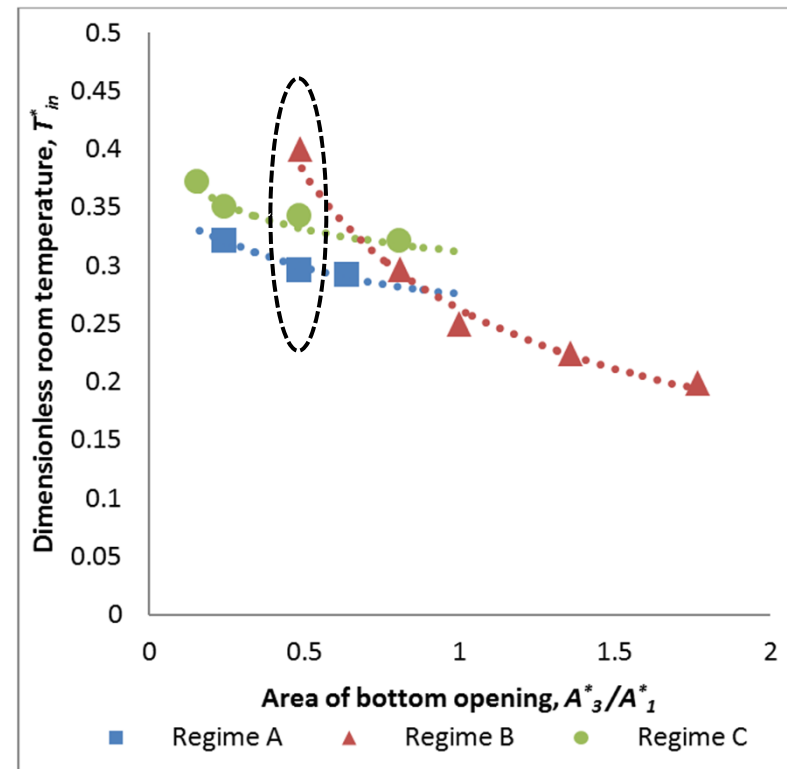
LES

Benchmark 2: Quantitative Results

variation of room temperature with area ratio



URANS

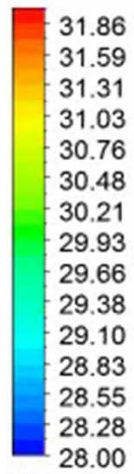


LES

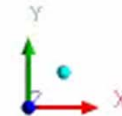
Benchmark 2 Results: *transient behaviour (C -> B)*



Temperature
Contour 1



[C]



Findings

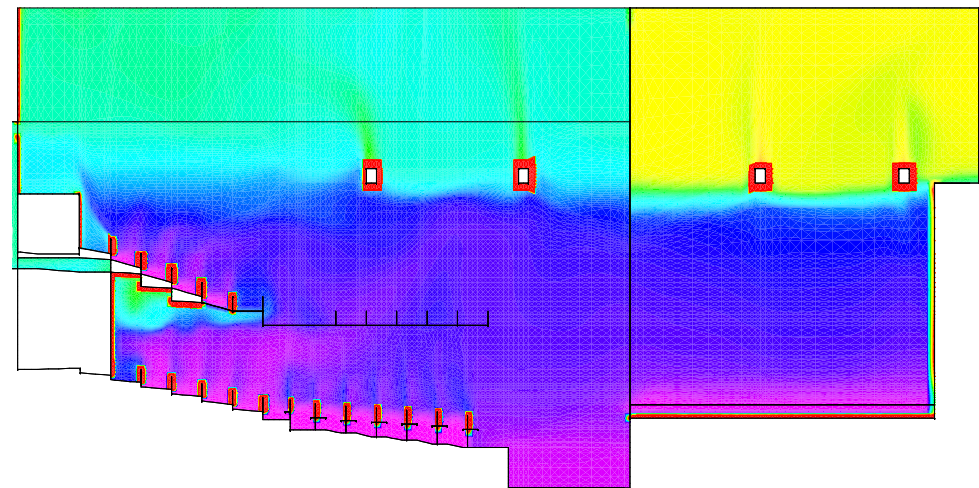
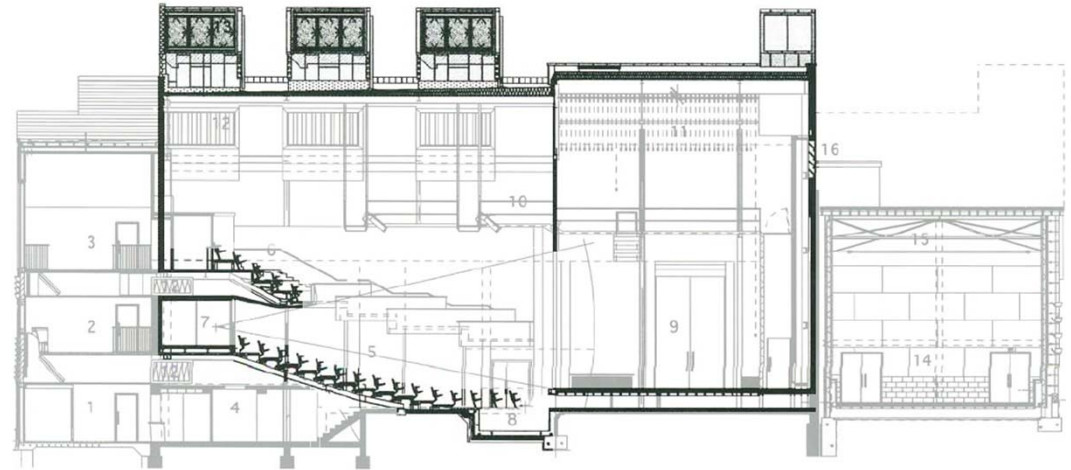
- Benchmark 1 (twin plume)
 - LES provided better prediction of plume volume flux, especially in merge vicinity
 - Pressure and temperature iso-surfaces (LES) gave greater insight into entrainment phenomena
 - Spectral analysis revealed low frequency motions (poss. plume meander)

- Benchmark 2 (solution multiplicity)
 - LES and URANS both successfully predicted three steady states
 - URANS under-predicted mixing
 - LES predicts solution multiplicity well (URANS poor for $A_3 < 6\text{mm}$ dia)
 - LES also demonstrated potential for switching modes
 - Simulation time
 - LES:URANS = 500:1 !!

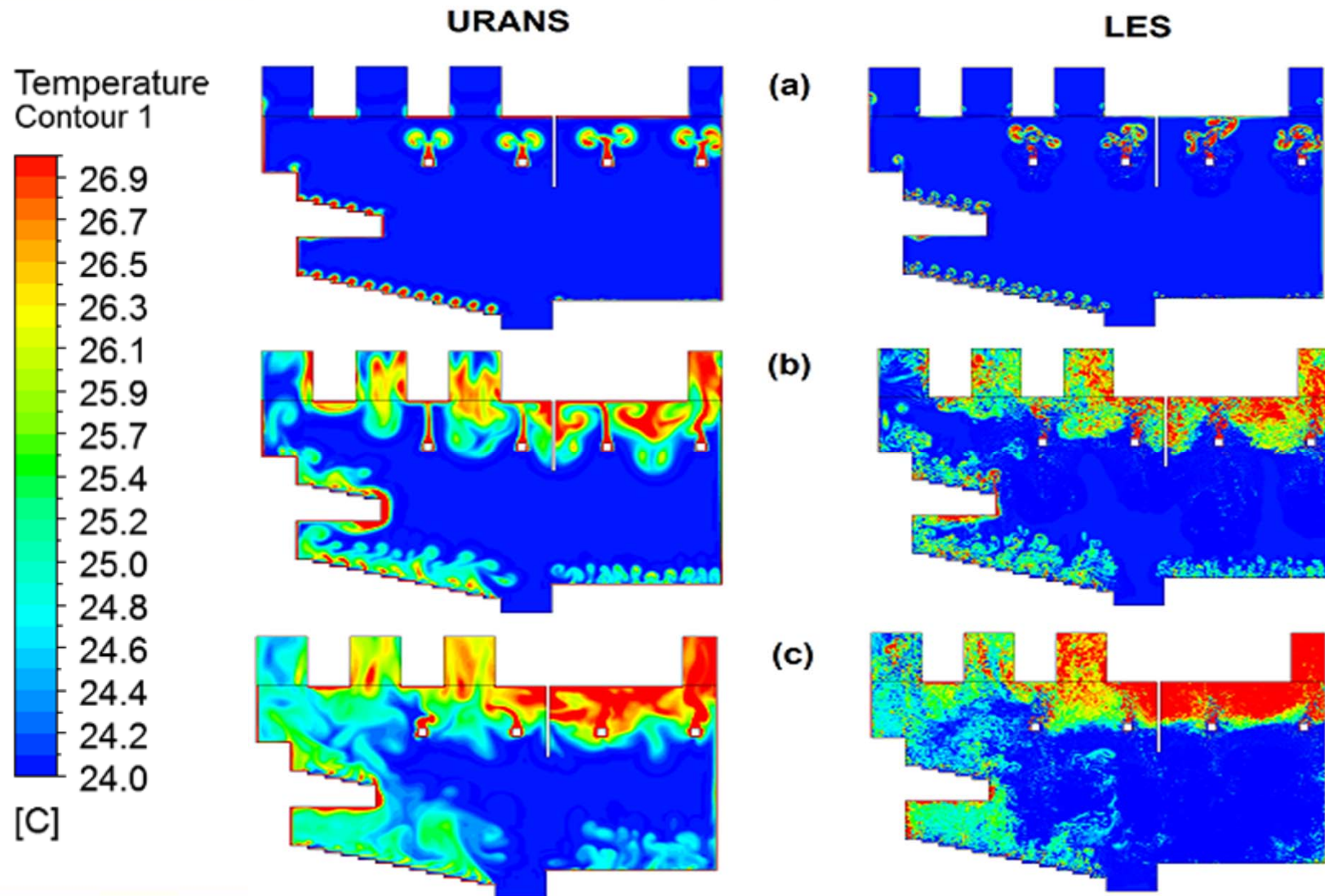
Guidelines

- Mesh structure
 - $L/\Delta > 12$
 - L = Integral turbulent length scale
 - Δ = filter width
 - $k_{RES}/k > 0.8$ [>80% of the domain is being resolved and less than 20% is being modelled]
- Time steps:
 - Maintain $0 < CFL_{max} < 0.5$
 - If planning FFT, keep time-step constant
- If flow evolution not important, use RANS to evolve flow, then LES
- Use lots of hardware!
 - Approx. 100 processors in parallel to run viable LES (2013)

Application: The Lichfield Garrick

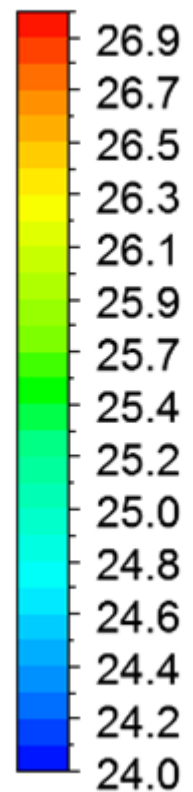


Application: The Lichfield Garrick: URANS vs LES



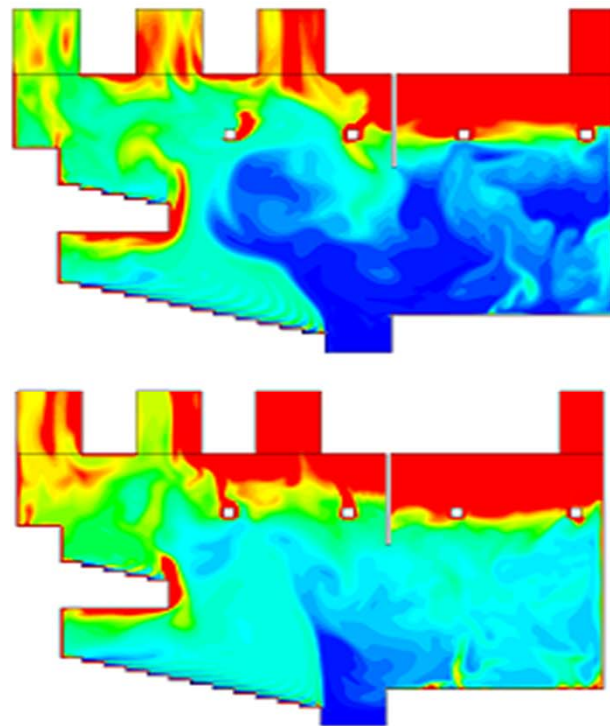
Application: The Lichfield Garrick: URANS vs LES

Temperature
Contour 1

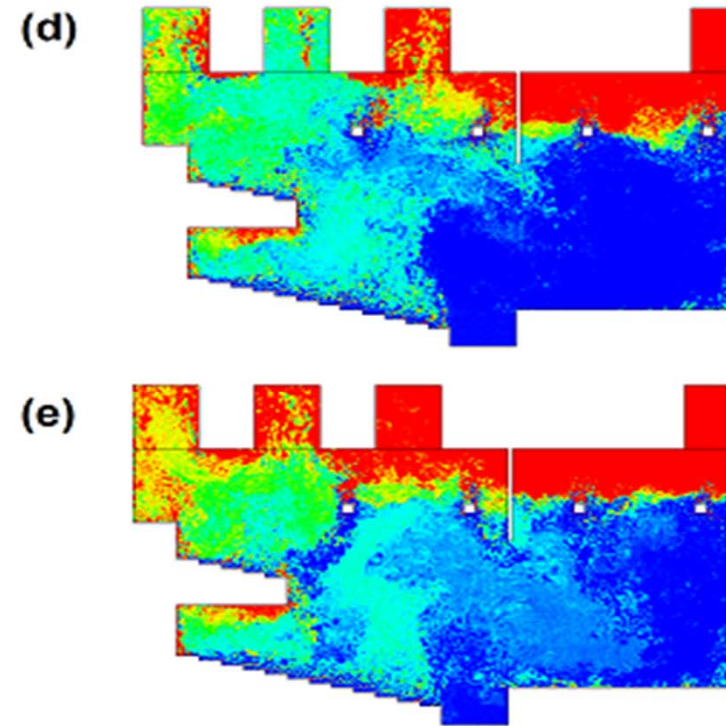


[C]

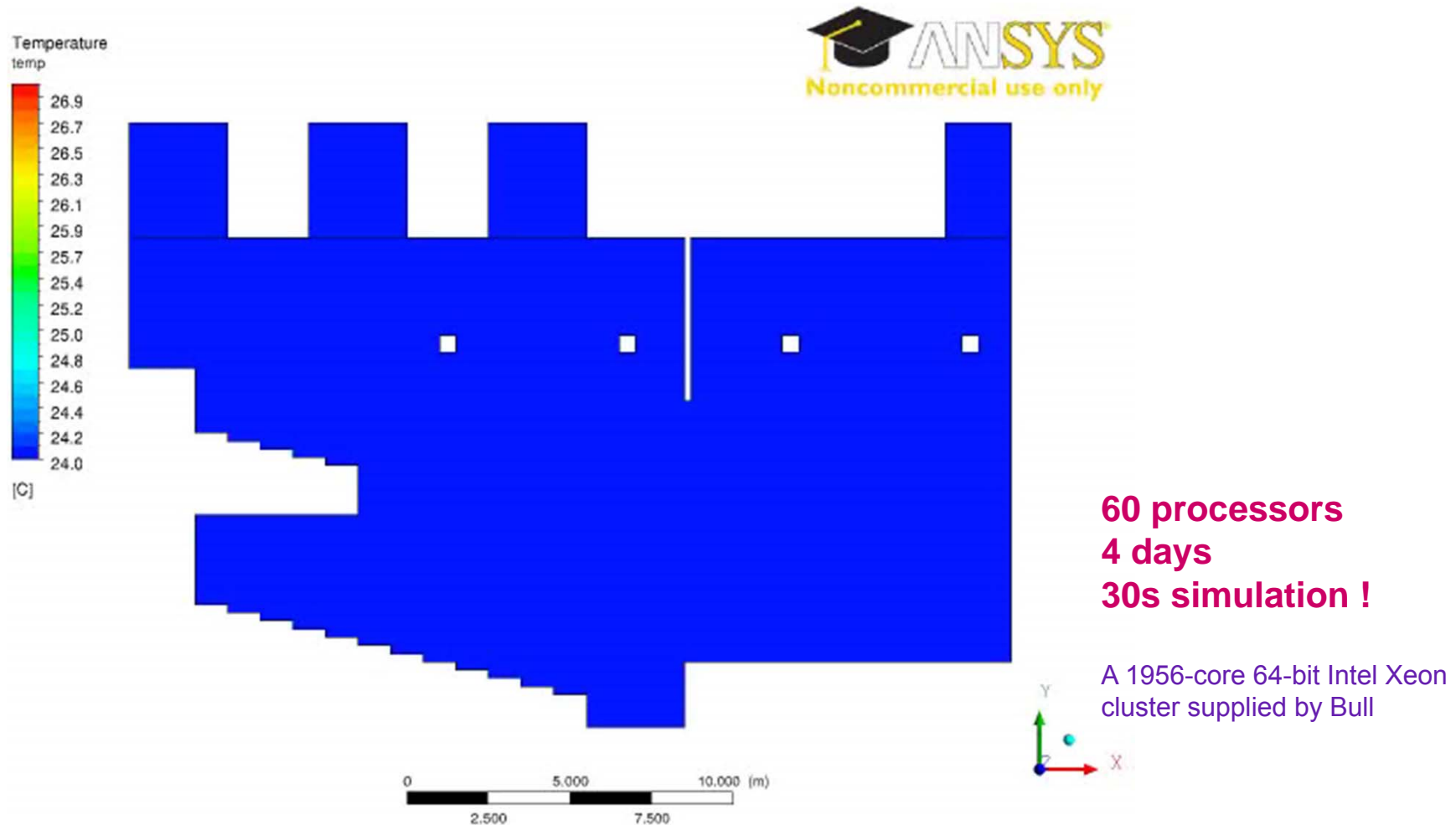
URANS



LES



Application: The Lichfield Garrick



Hardware development

Date	Machine type	Processor	Memory
1993-1996	SPARCstation 2	Single processor (single core)	8 MB - 64MB
2008	Toshiba Laptop	Two dual core processors (4 cores)	2 GB
September 2010	HPC Cluster	118 12-core nodes (1,416 cores)	2.8 TB
June 2011	HPC Cluster extension	163 12-core processors (1,956 cores)	3.9 TB



THANK YOU !

***[http://www.lboro.ac.uk
/departments/cv/](http://www.lboro.ac.uk/departments/cv/)***

Malcolm.Cook@lboro.ac.uk