



**BAILY
GARNER**

GEOMETRY IMPORT HACKS

(Tips & Tricks)



CONTENTS

- Background
- Scope
- Possible Workflows & Issues
- Case Study
- Best Practice & Solutions



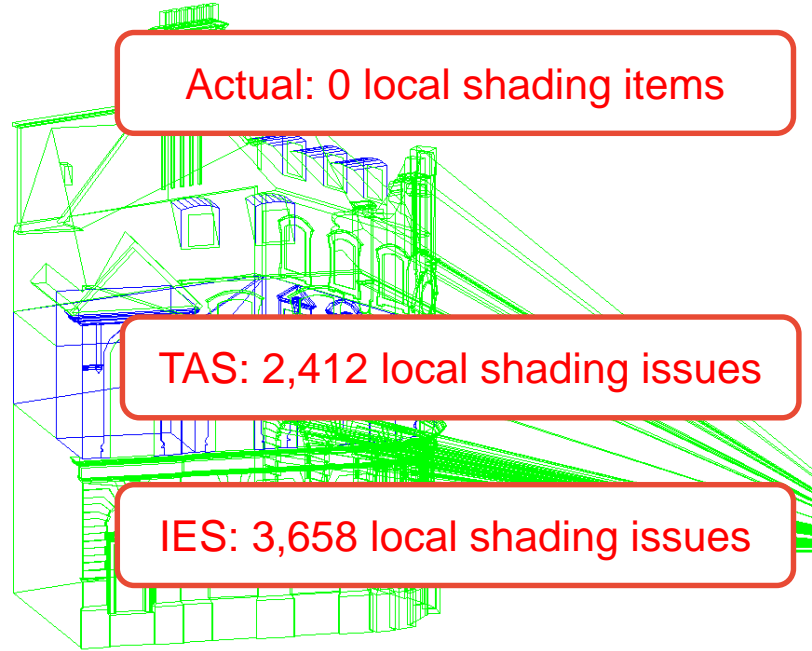
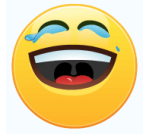
BACKGROUND

- Tom James
 - Mechanical Engineer
 - Quantity Surveyor
 - BIM technician for 10 years
 - Software developer for 7 years
- Baily Garner
 - Multidisciplinary consultancy
 - 170 staff in 3 UK offices
 - Residential, education, health & commercial sectors



SCOPE: Why should you care?

- White paper or documentation for BIM integration for each environmental package exist. So... all Architect's use it for each model they produce, right?



SCOPE: Included/Excluded Software

INCLUDED

Design Packages



SketchUp™ (Trimble)



FormIT™ (Autodesk)



Dynamo™ (Autodesk)



Revit™ (Autodesk)



AutoCAD™ (Autodesk)

Thermal Packages



IES™ (IES Environmental)



TAS™ (GDSDL)



Insight 360™ (Autodesk)

EXCLUDED

Design Packages



ArchiCAD™ (Graphisoft)



Vectorworks™ (Nemetsc..)



Microstation™ (Bentley)

Many others.....

Thermal Packages



Sefaira™ (Cleantech)



Design Builder™ (Design Builder)

Many others.....

POSSIBLE WORKFLOWS: Export variations?

- 2 direct export methods from Revit:
 - Conceptual mass of surfaces only
 - Spaces/Rooms which imports 3D representations
- Non-surface building representation
gbXML files are 4 times larger than surface types

File size comparison:

File Type	Size	Ratio
gbXML (Surfaces)	3.0 MB	100%
gbXML (Solids)	11.3 MB	376%
Revit (purged)	23.2 MB	777%
IFC	9.2 MB	307%

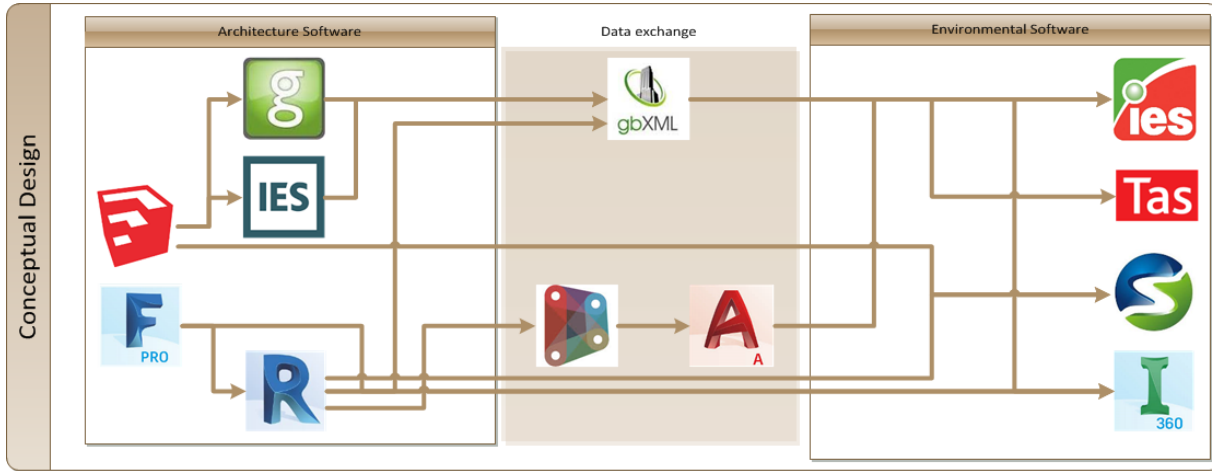
SCOPE: Software Aspirations

Requirement	Why?
CIBSE compliance	No certification without this (SBEMs or EPCs)
IFC Compliance	The international open format is import, despite many of the energy software products not using it.
64 bit	Are you using the capabilities of modern operation systems?
Multithreading	Are you using the capabilities of your local hardware?
Cloud based	Are you using the phenomenal power of the global data hardware?

SCOPE: Geometry input formats for IES

File Format	Pros	Cons
DXF	<ul style="list-style-type: none">• Imports zone naming• Imports windows• Imports doors• Imports “thin walls”	<ul style="list-style-type: none">• 2D plan of each floor• Single window type• Single door type• No material• No construction layers
gbXML	<ul style="list-style-type: none">• Imports zone naming• Imports windows• Imports doors• Imports “thin & thick walls”	<ul style="list-style-type: none">• Unreliable geometry transfer
IFC	<ul style="list-style-type: none">• Imports materials• Imports construction layers	<ul style="list-style-type: none">• Imports “thick walls” only

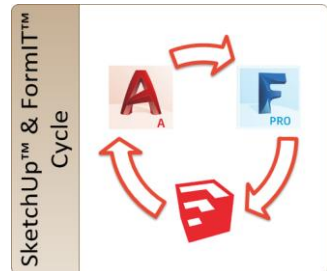
POSSIBLE WORKFLOWS: All workflows within scope



- Software Programmes
- Revit™
 - FormIT™ PRO
 - AutoCAD™
 - SketchUp™
 - Dynamo™
 - Model Builder™
 - IES™
 - Insight360™
 - Sefaria™
 - TAS™

- File Formats
- DXF**
Drawing Exchange Format
 - RVT**
Revit™ extension
 - AXM**
FormIT™ extension
 - SKP**
SketchUp™ extension
 - DWG**
AutoCAD™ Drawing extension
 - gbXML**
Green Building Extensible Markup Language
 - MIT**
IES extension

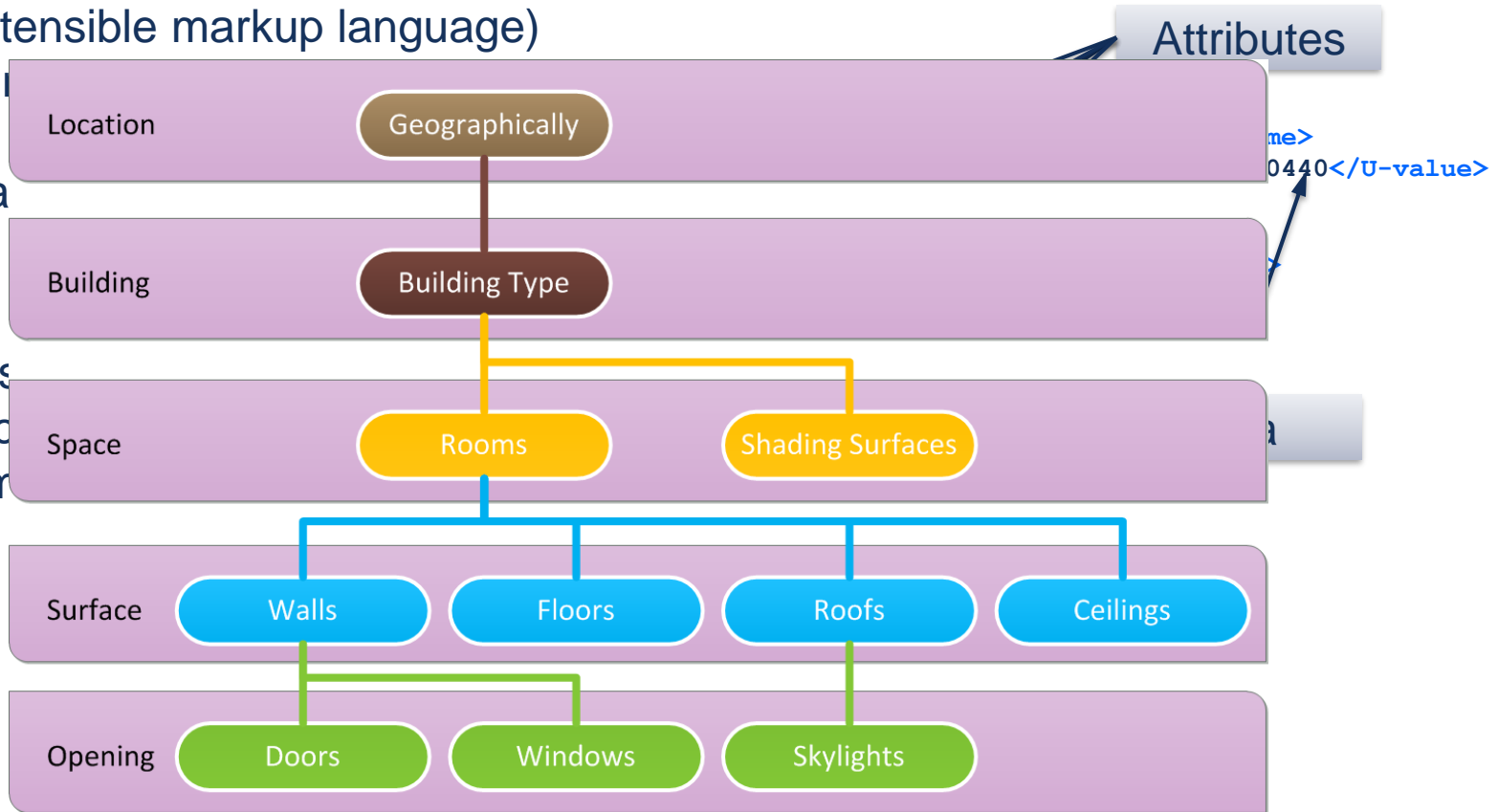
- SketchUp™ Add-ins
- gModeler**
by Greenspace
 - IES**
by IES



POSSIBLE WORKFLOWS: What is gbXML?

- XML (extensible markup language) is a computer language that contains information and data

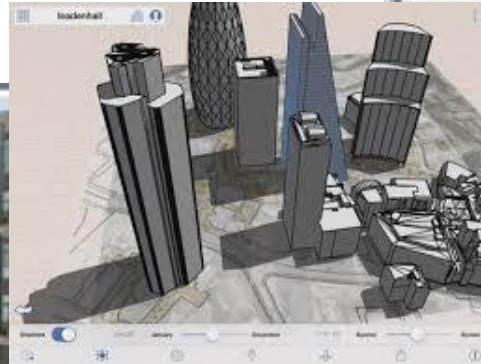
- gbXML is a standard that has specifications for building environment



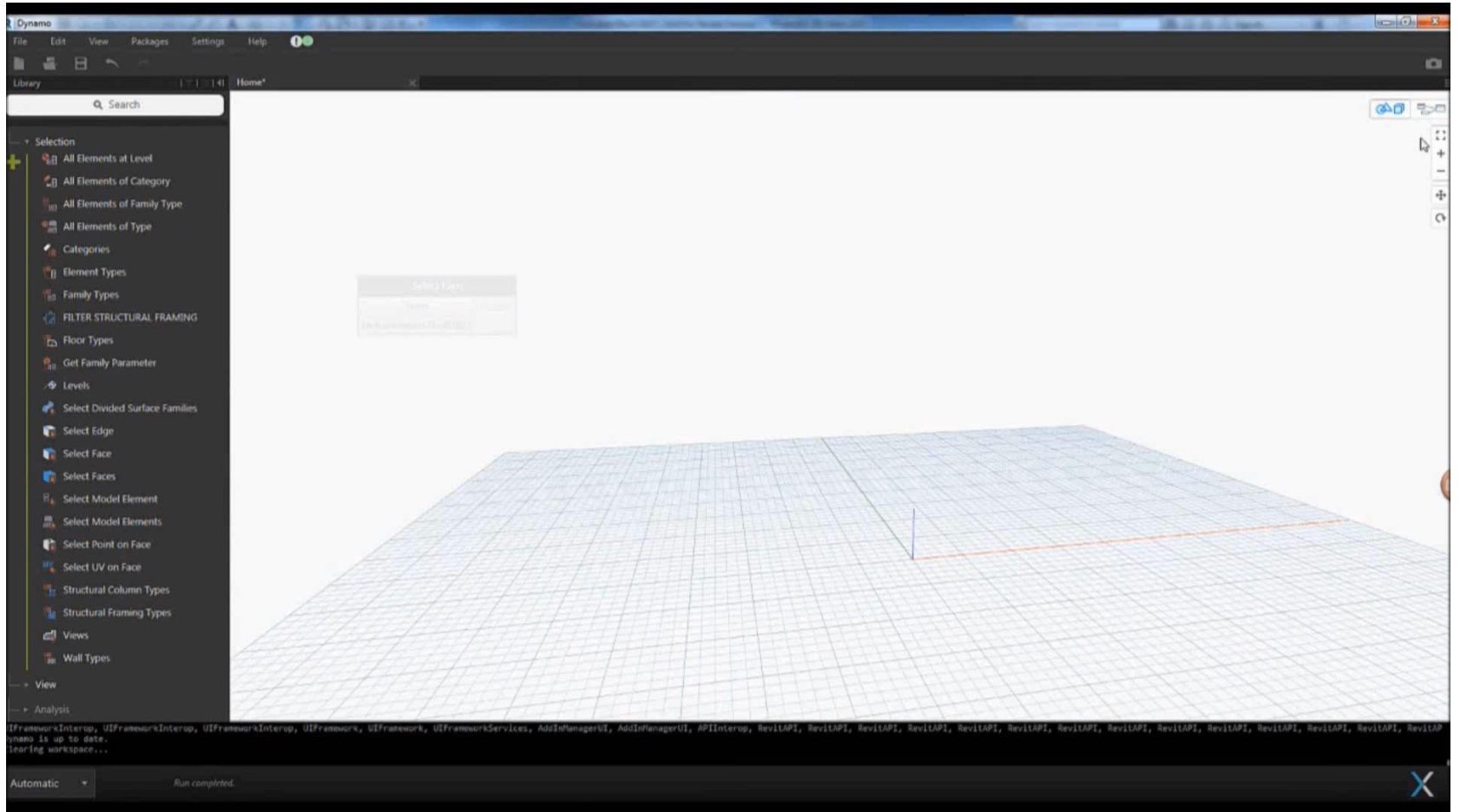
POSSIBLE WORKFLOWS: What is FormIT™



- SketchUp® competitor
- Key features
 - Concept design developer
 - Presentation renders
 - Satellite imager import, GIS and weather locations
 - Thermal and solar analysis



POSSIBLE WORKFLOWS: What is Dynamo™



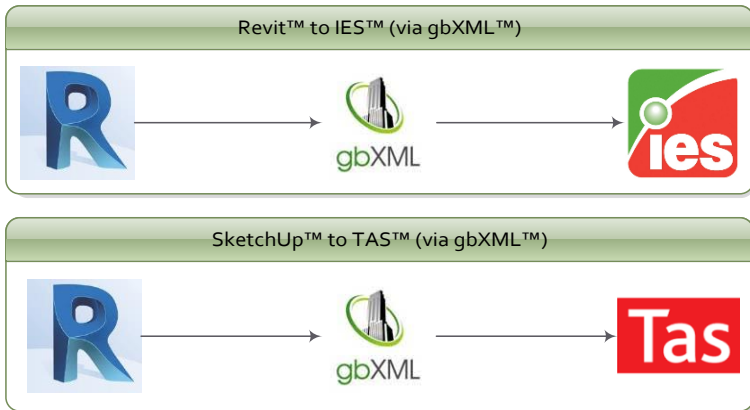
POSSIBLE WORKFLOWS: What is Insight360?

The screenshot displays the Autodesk Insight360 web application. The browser address bar shows the URL <https://insight.autodesk.com/oneenergy/insight>. The page header includes the Autodesk Insight logo and navigation links for INSIGHTS, LEARNING, and SUPPORT. A user profile for TOM JAMES is visible in the top right corner.

The main content area is titled "Insights" and features a "Create Insight" button with a plus sign icon. Below this, there is a card for "All Uncategorized" insights, which includes a red and white geometric pattern, the text "All Uncategorized", a timestamp "3.12.2018 - 02:05 PM", and a small icon representing one insight.

At the bottom of the page, there is a "2030 PALETTE" logo on the left and the Autodesk logo on the right. The footer text reads: "© Copyright 2015 Autodesk Inc. All rights reserved. | Legal Notices & Trademark | Privacy Policy".

POSSIBLE WORKFLOWS: Workflow 1



Item	Compliant	Success Rate
CIBSE	Yes	100%
IFC	Yes	100%
Multi-threaded	Version dependent	50%

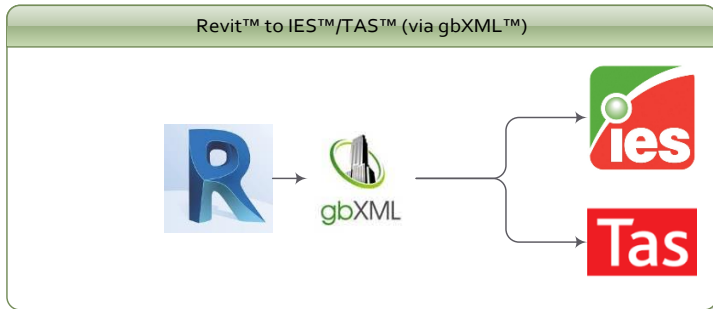
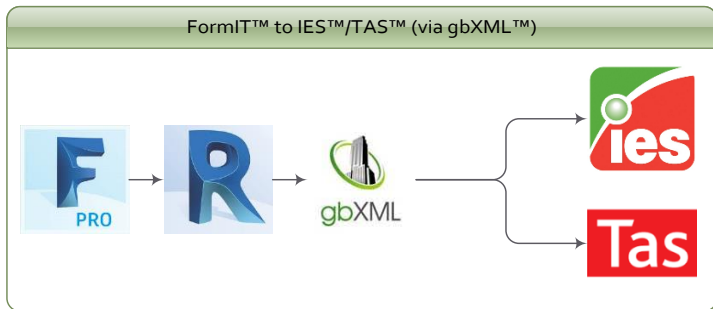
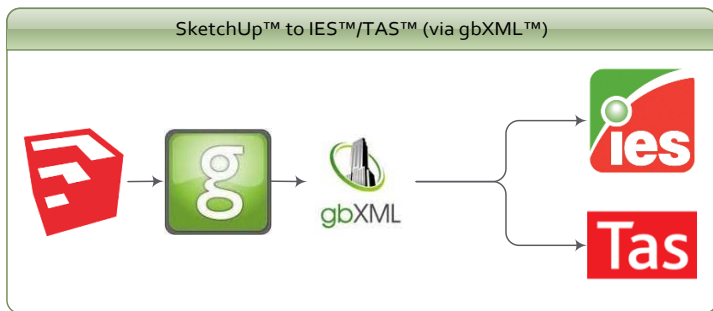
Revit direct exports types:

- Conceptual mass of surfaces only
- Spaces/Rooms which imports 3D representations

Via Rooms or Spaces:

- 3D Objects produce twin surfaces for each element
- Too detailed
- Wall junctions cause errors

POSSIBLE WORKFLOWS: Workflow 2



Item	Compliant	SketchUp	FormIT	Revit
		Success Rate		
CIBSE	Yes	100%	100%	100%
gbXML	Yes	80%	90%	60%
IFC	Yes	0%	0%	100%
Multi-threaded	Version dependent	0%	100%	50%

- Windows don't import without openings
- Doors don't import without openings
- IES doesn't have a "watertight" option

Dynamo

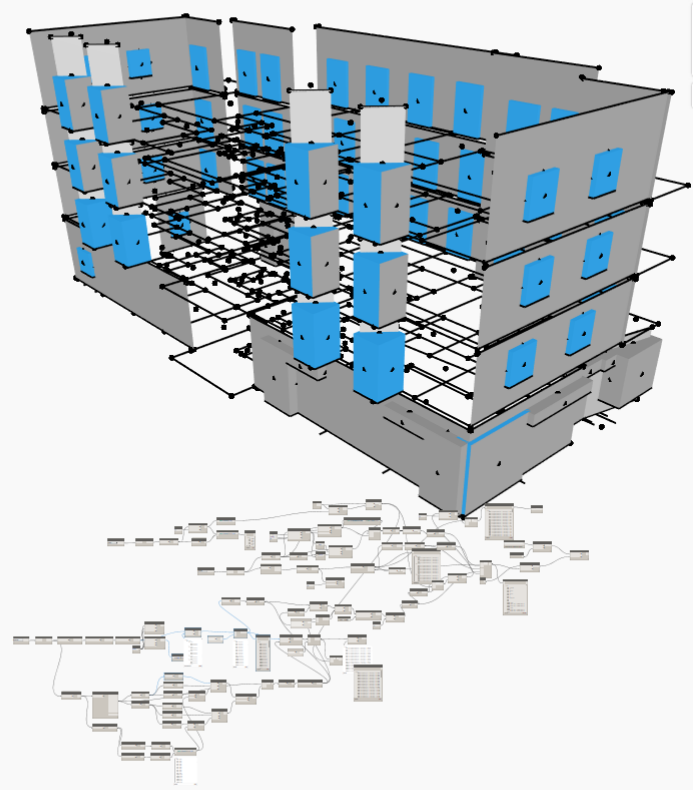
File Edit View Packages Settings Help

Library | Space Boundaries v1.dyn*

Search

- Analyze
- Archive
- BuiltIn
- Clockwork
- Core
- Display
- Geometry
- LunchBox
- Office
- Operators
- Revit
- Rhythm
- SteamNodes
- vasshaug

Add



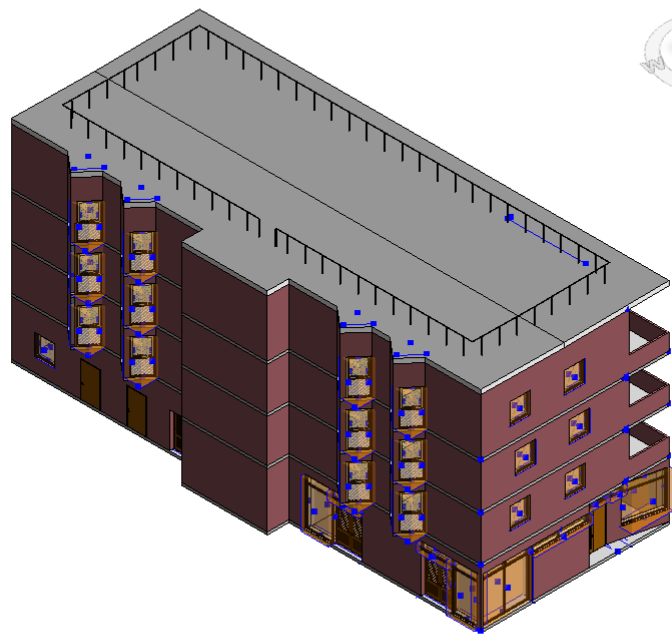
Manual Run Run completed.

28772 Block ... Type a keyword or phrase tom.james@li...

Architecture Structure Systems Insert Annotate Analyze Massing & Site Collaborate View Manage Add-Ins Site Designer

Modify Materials Additional Settings Design... Mana... Phases Selection Inquiry Macros Visual Pr...

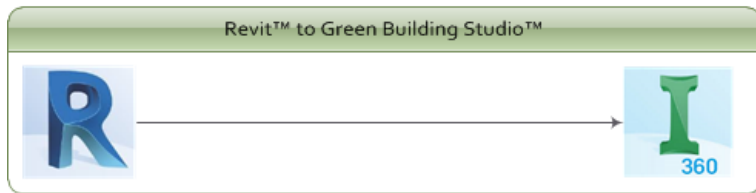
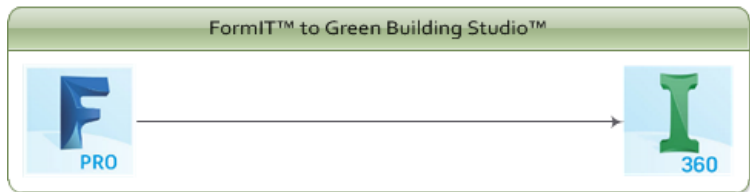
Select Settings Project Location Phasing Selection Inquiry Macros



1 : 100 Main Model

Click to select, TAB for alternates, CTRL adds, SHIFT unselects.

POSSIBLE WORKFLOWS: Workflow 4



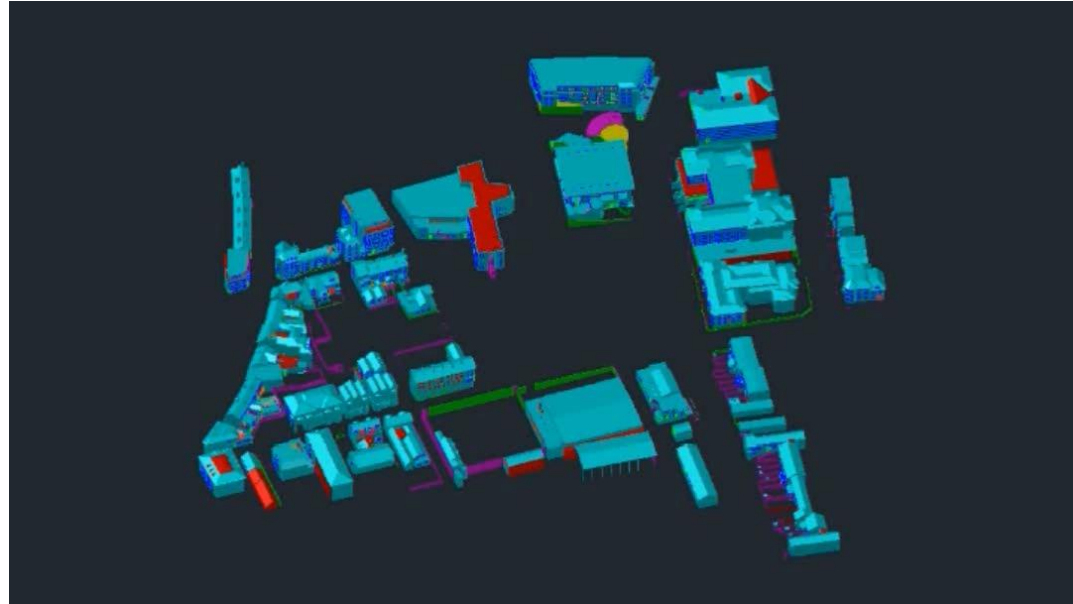
Item	Compliant	FormIT	Revit
		Success Rate	
CIBSE	No	0%	0%
gbXML	Yes	0%	100%
IFC	Version dependent	0%	100%
Multi-threaded	Version dependent	100%	50%

Insight360 included within:

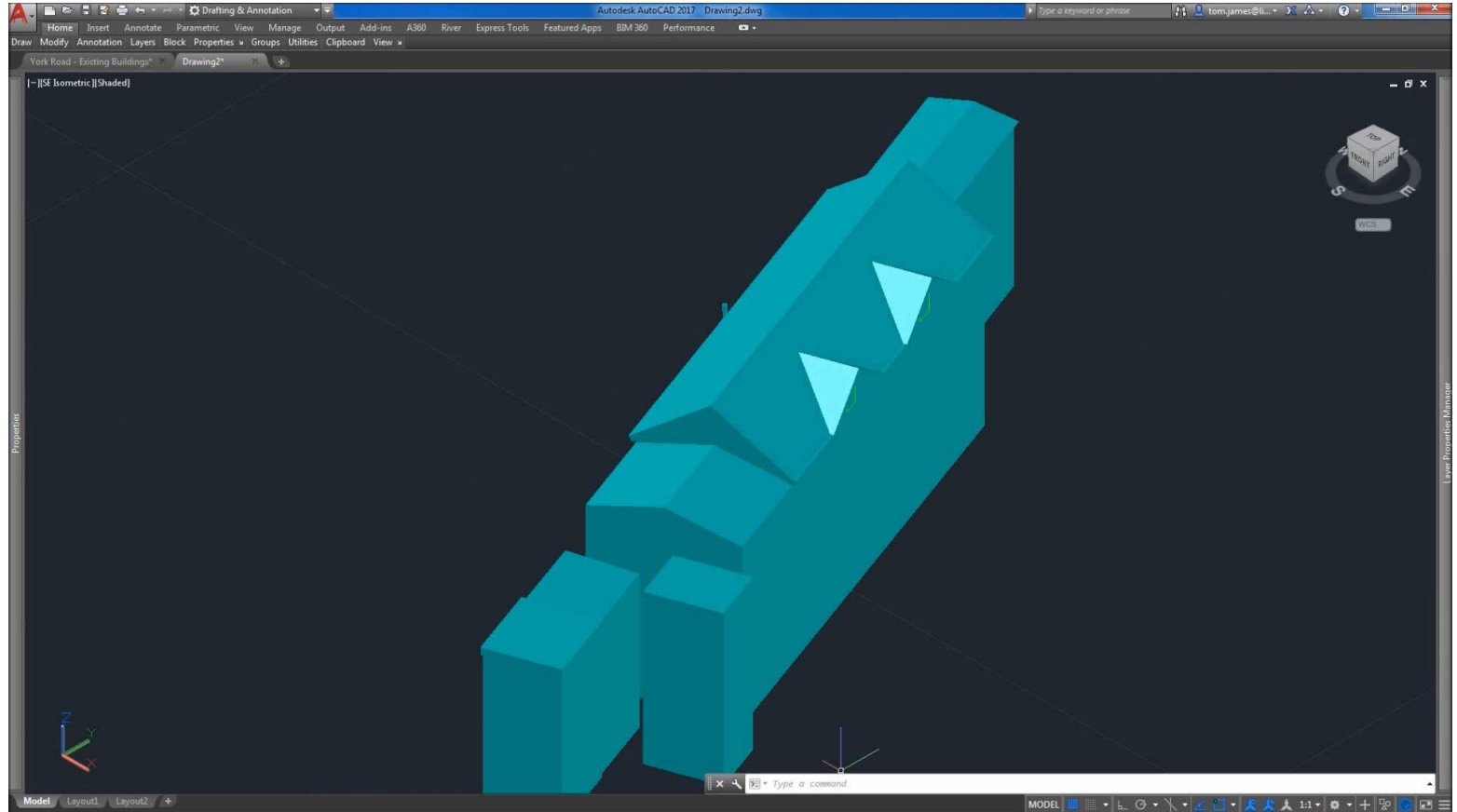
- AEC Collection (subscription)
- Any Building Design Suite (pre 2018)

CASE STUDY: Overview

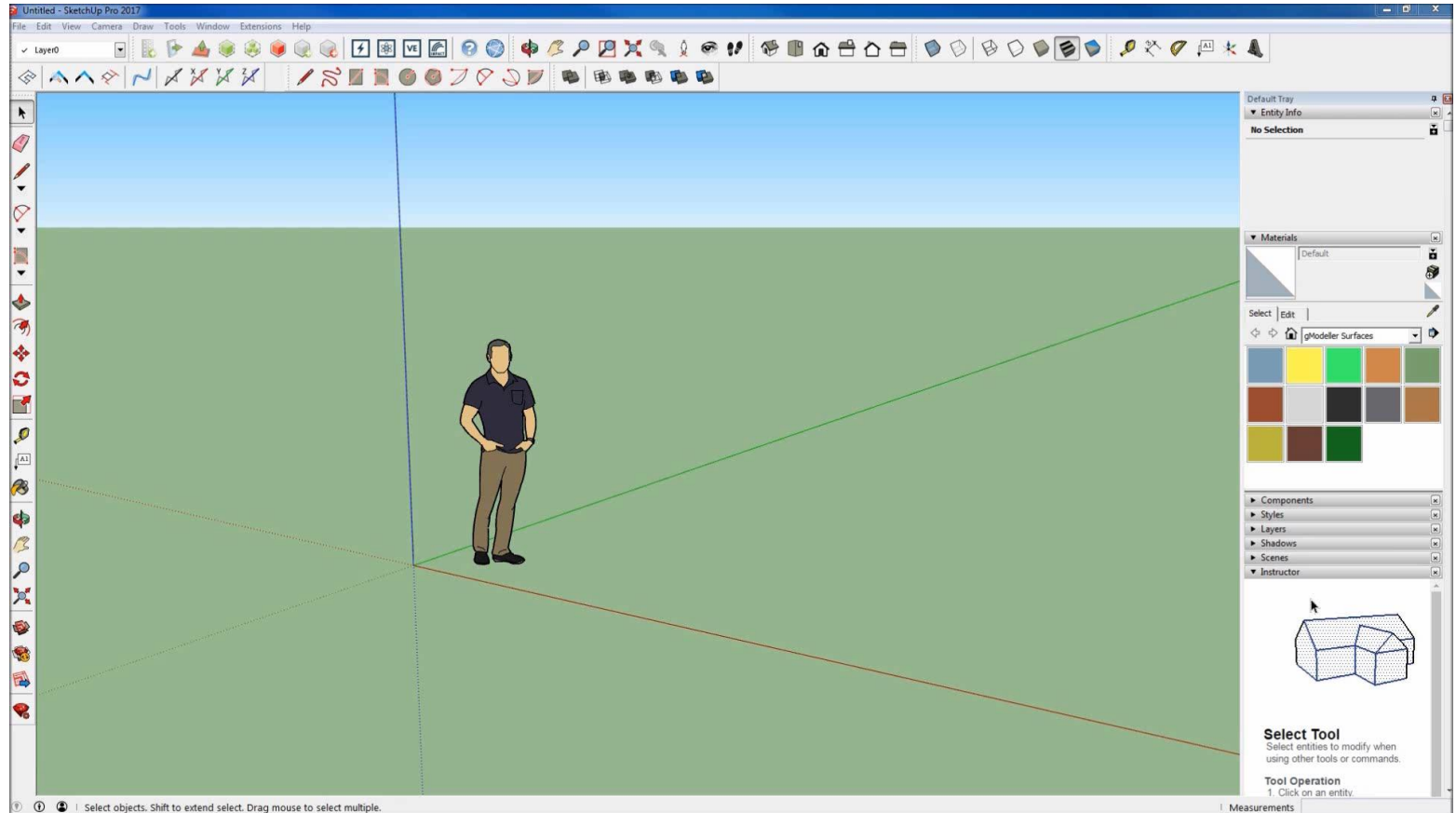
- Daylight shading analysis
- Site survey in AutoCAD 3D solids
- Polyline outlines of windows & doors
- 7 new high rise blocks (6 to 10 floors)
- 47 buildings across Town Centre including actual elevations



CASE STUDY: AutoCAD Process

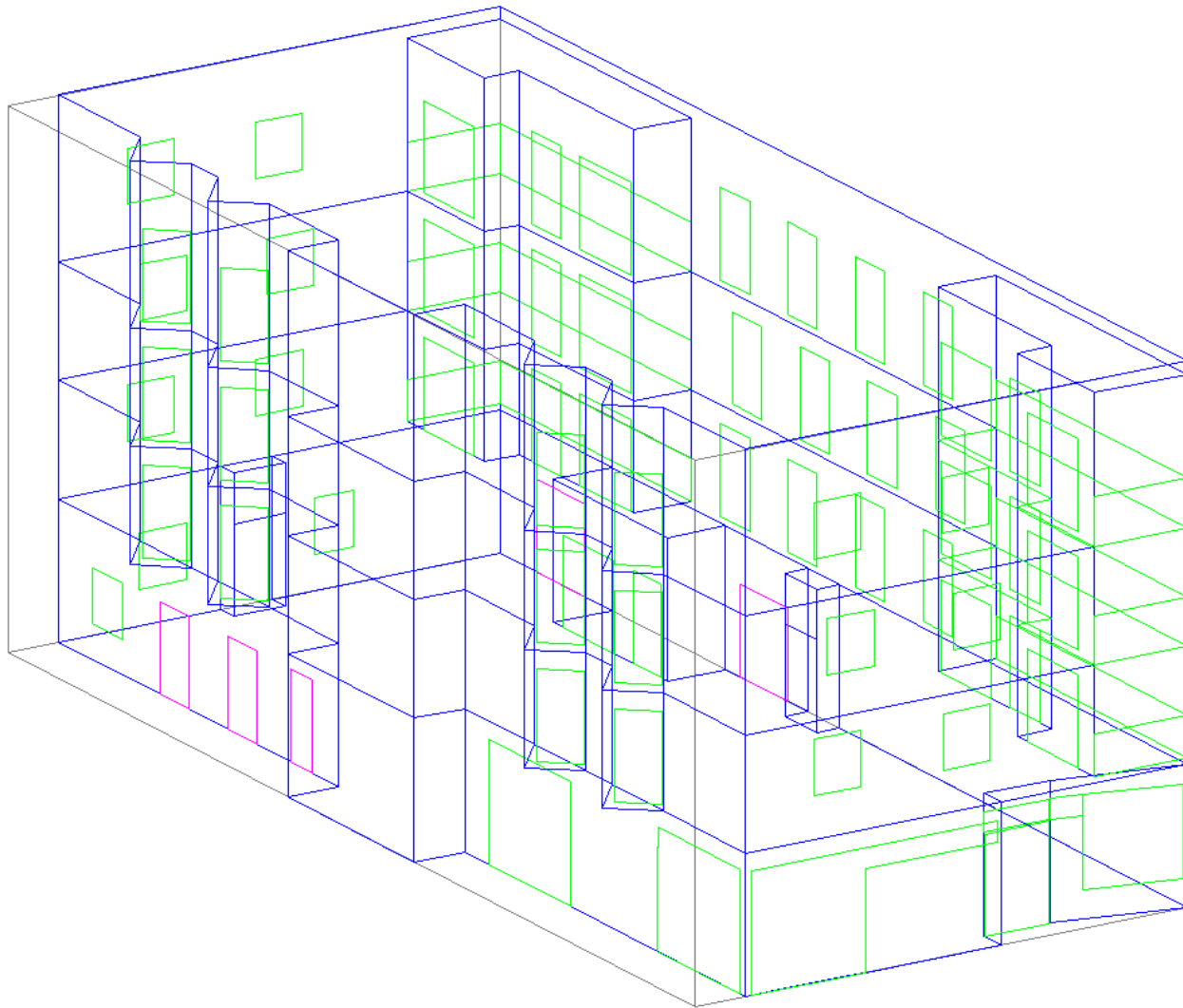
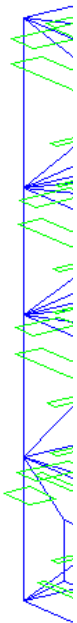
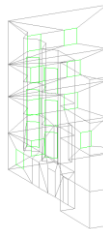


CASE STUDY: SketchUp Process

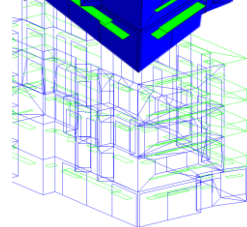
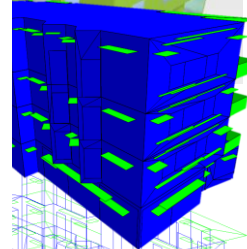
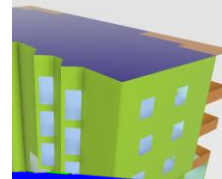
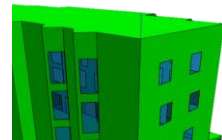


Revit >

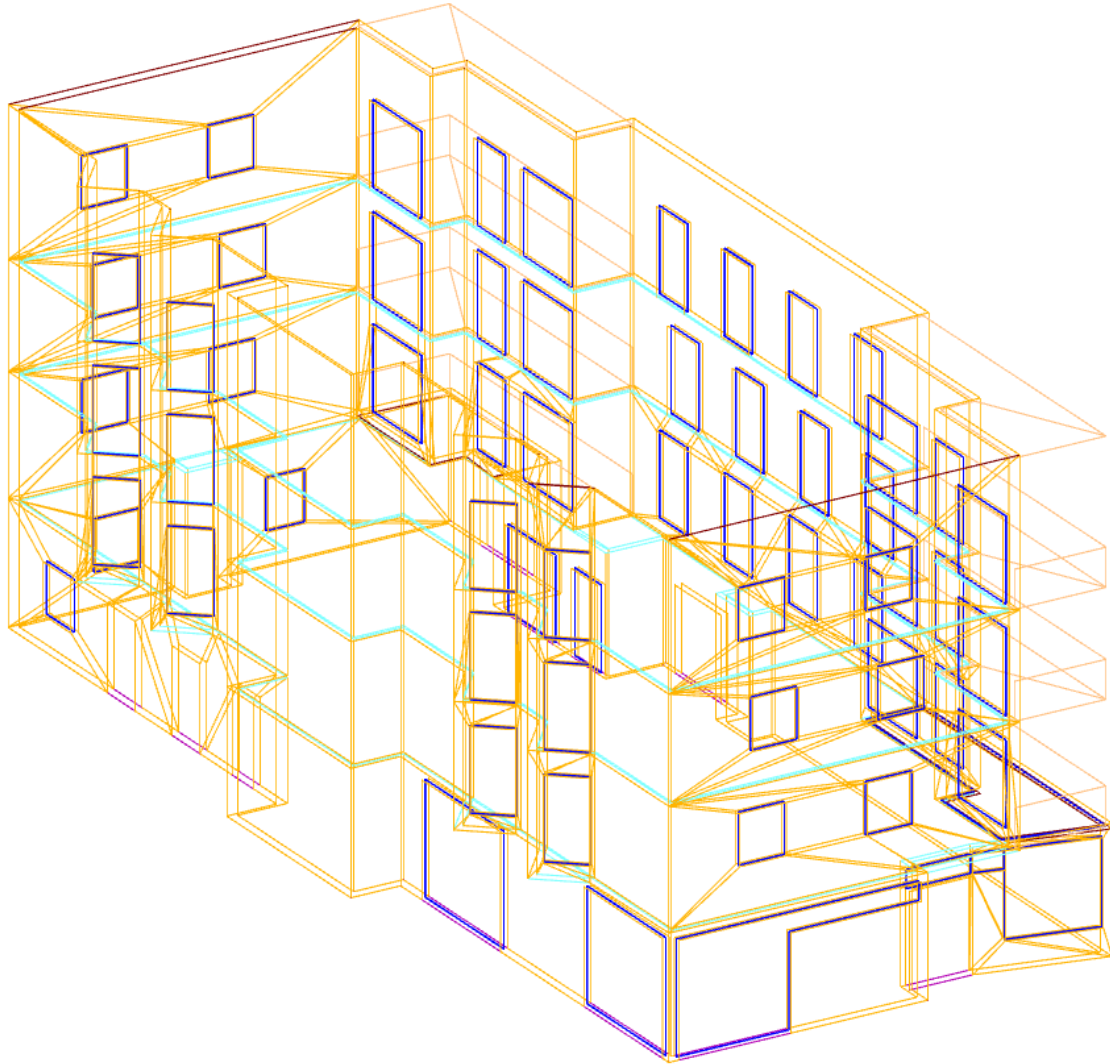
Front



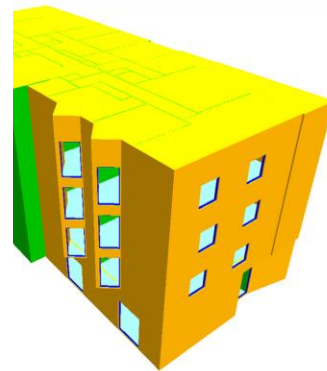
nIT >
ht360



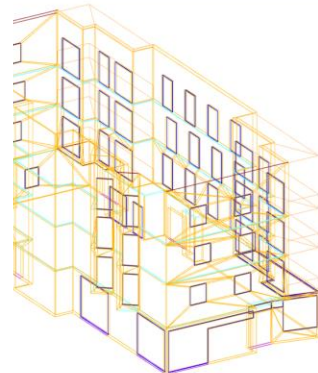
Design Build



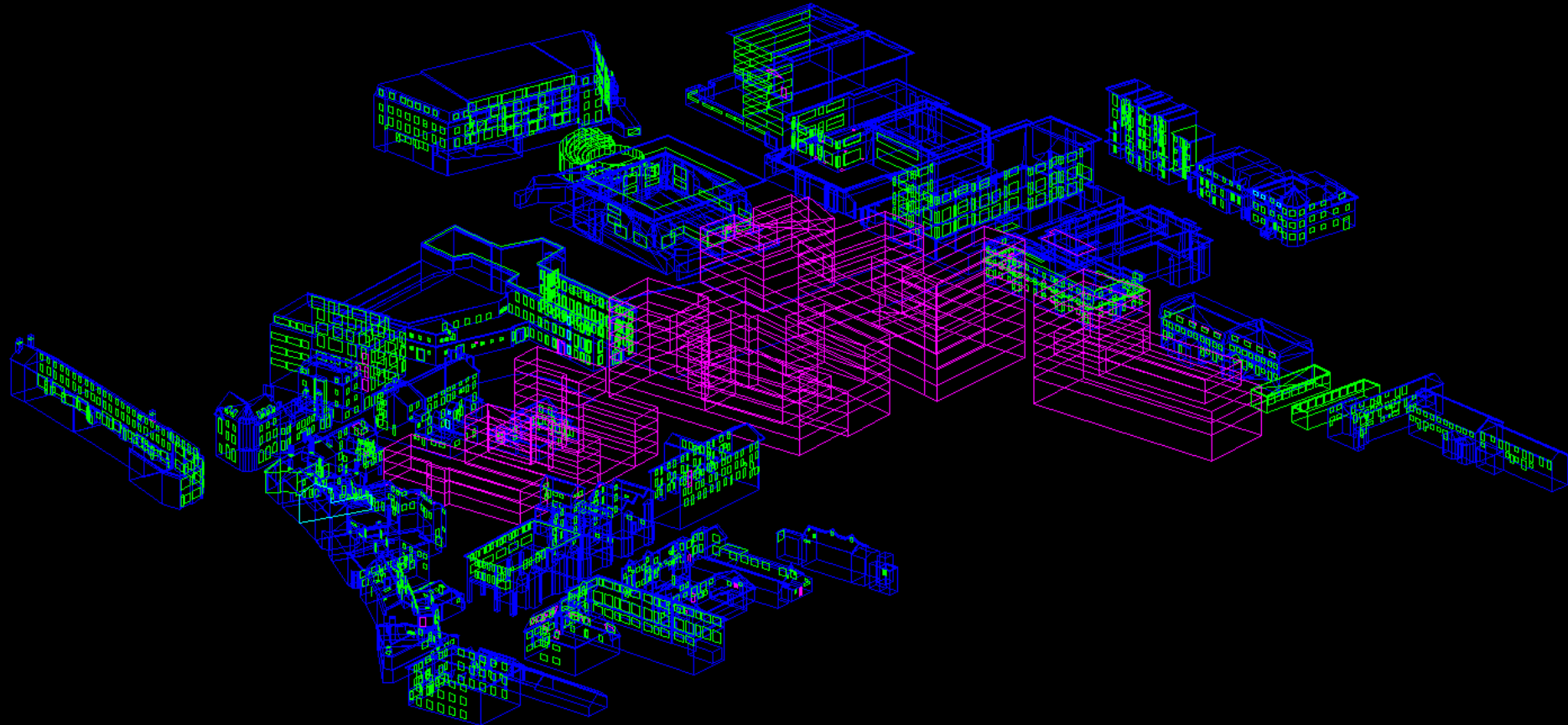
Render



/wireframe (within IES)

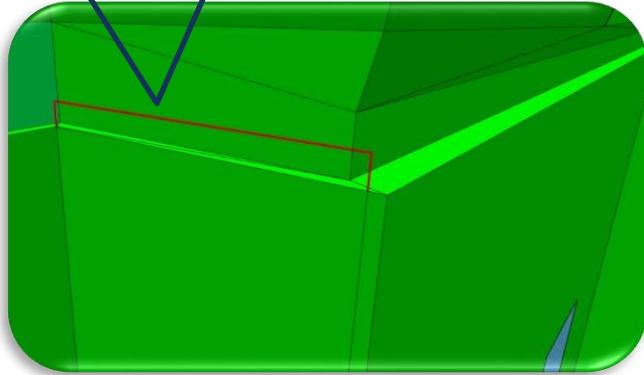


CASE STUDY: Final IES Model

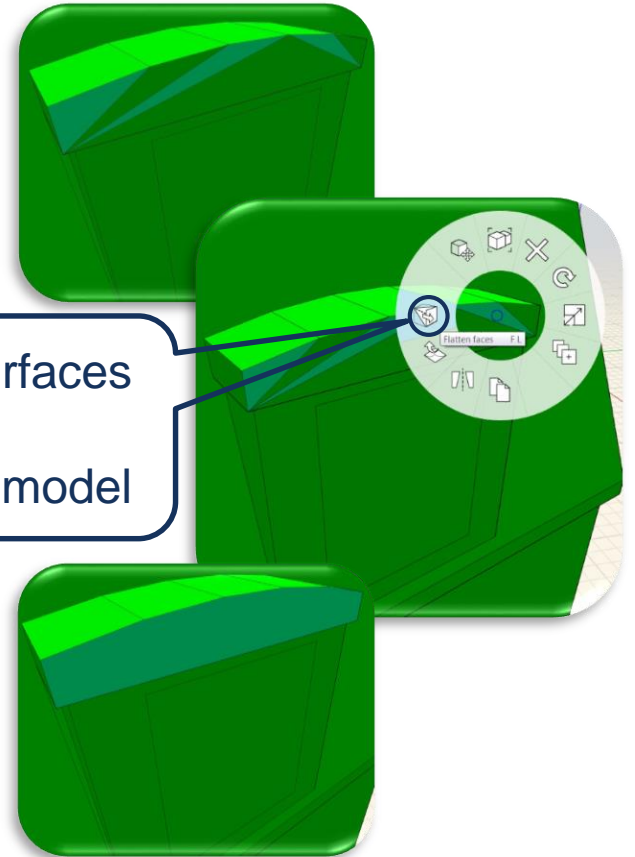


BEST PRACTICE & SOLUTIONS: Simplifying Geometry (in FormIT™)

1. "Watertight mode" highlights issues

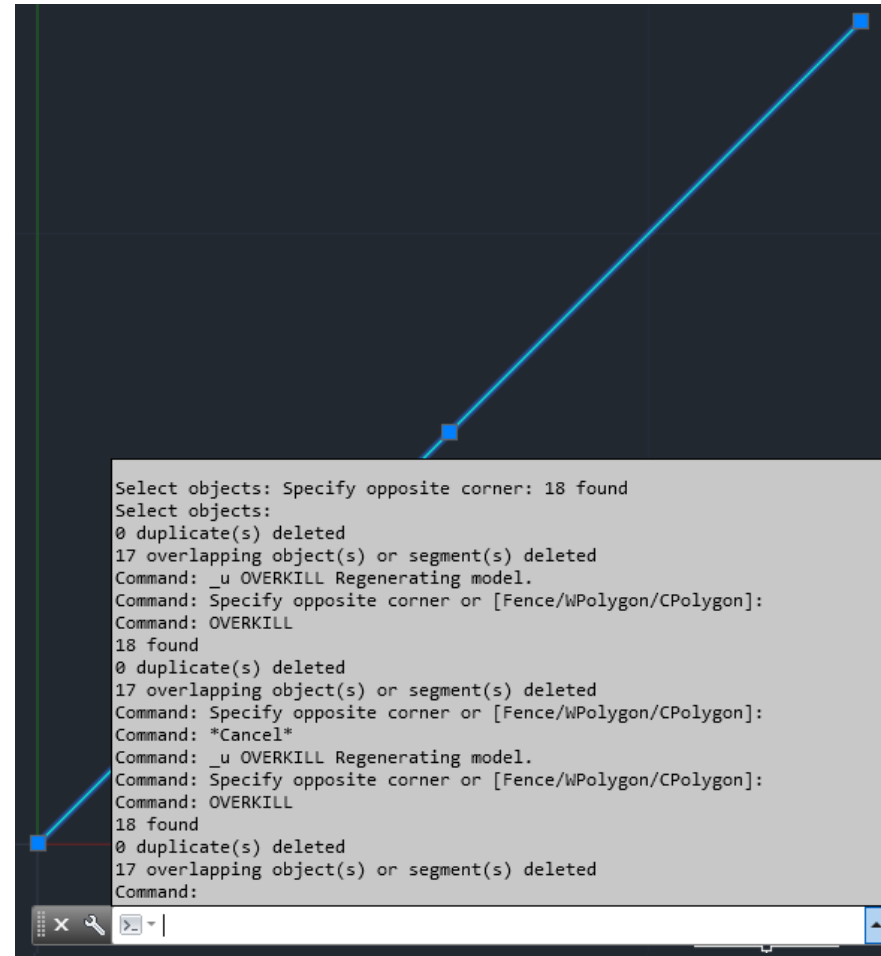


1. Flatten surfaces greatly simplifies model



BEST PRACTICE & SOLUTIONS: Overlapping Lines

- AutoCAD can handle overlapping and co-linear lines
- Using the “OVERKILL” AutoCAD function



SUMMARY

- Scope
- Possible Workflows
- Case Study
- Best Practice & Solutions





**Any
Questions?**

THANK YOU