

SoPHE NEWSLETTER

SUMMER 2023

VOLUME 03



SoPHE ANNUAL PLUMBING COMPETITION

PAGE 10

Friday 16th of June saw the return of the annual Plumbing Centre of Excellence/ Young Engineers Network Plumbing Competition at the College of North West London.

EDITORS SECTION

A SoPHE Members call to arms!

PAGE 3

UPCOMING EVENTS

Save these dates

PAGE 4

MEMBERSHIP UPDATE

Peter White

PAGE 8

SoPHE NORTHERN DINNER REPORT

PAGE 9

JOIN SoPHE TODAY
[CLICK HERE](#)

UPDATE FROM SOPHE INDUSTRY WORKING GROUP CHAIR

Paul Marsden

Welcome to the Summer edition of our SoPHE Newsletter. This is the third issue in its 'newsletter' format, and I hope you are enjoying both the format and content.

On the 16 June the PCE/YEN competition took place at the College of North West London, with 32 young engineers and students participating and engaging enthusiastically with the challenges presented to them. Further details can be found inside.

This edition has a focus upon sustainability. Of all earth's resources water is one of, if not the most vital. Whilst Public Health Engineering encompasses many areas, those of us involved within the industry have a responsibility to design products and systems with this, and the environment in mind.



The 67 SoPHE Industrial Associate members have a wealth of experience and expertise and willingly make this available. I would encourage you to engage with us at the earliest stages of your design and have no doubt doing so will help create a more sustainable Public Health environment.

I recall a quote by the legendary Max Fordham who, as it happens, had a direct association with Public Health engineering early in his career, including one notable project - Hulme 5.

"Start with the edge of the Universe as a boundary and quickly narrow down to the specific problem".

Your engagement with the Industrial Associates at the earliest of stages will allow them to quickly narrow down all their options to those products best suited to your design requirements.

Enjoy the read.

**Paul Marsden,
SoPHE Industry Working Group Chair,
Specification Manager — Public Health,
Baxi**

JOIN TODAY
CLICK HERE

SoPHE Members - A Call to Arms!

It's been a crazy few months with an overload of information, but we must, as an industry, move with the progressive times and include sustainable systems in our designs. On such an interesting and controversial subject, we have included some highlights in this issue.

As always, we have a need for your stories and experiences to help us in producing this newsletter. At the same time, how can we help you and produce a newsletter which suits your needs as members?

Last issue I highlighted that sustainability is as a subject that Thames Water are promoting, and we need to embrace this and offer our clients savings.

Please send your articles and questions to sophe@cibse.org

IS IT SAFE TO DRINK THE WATER?

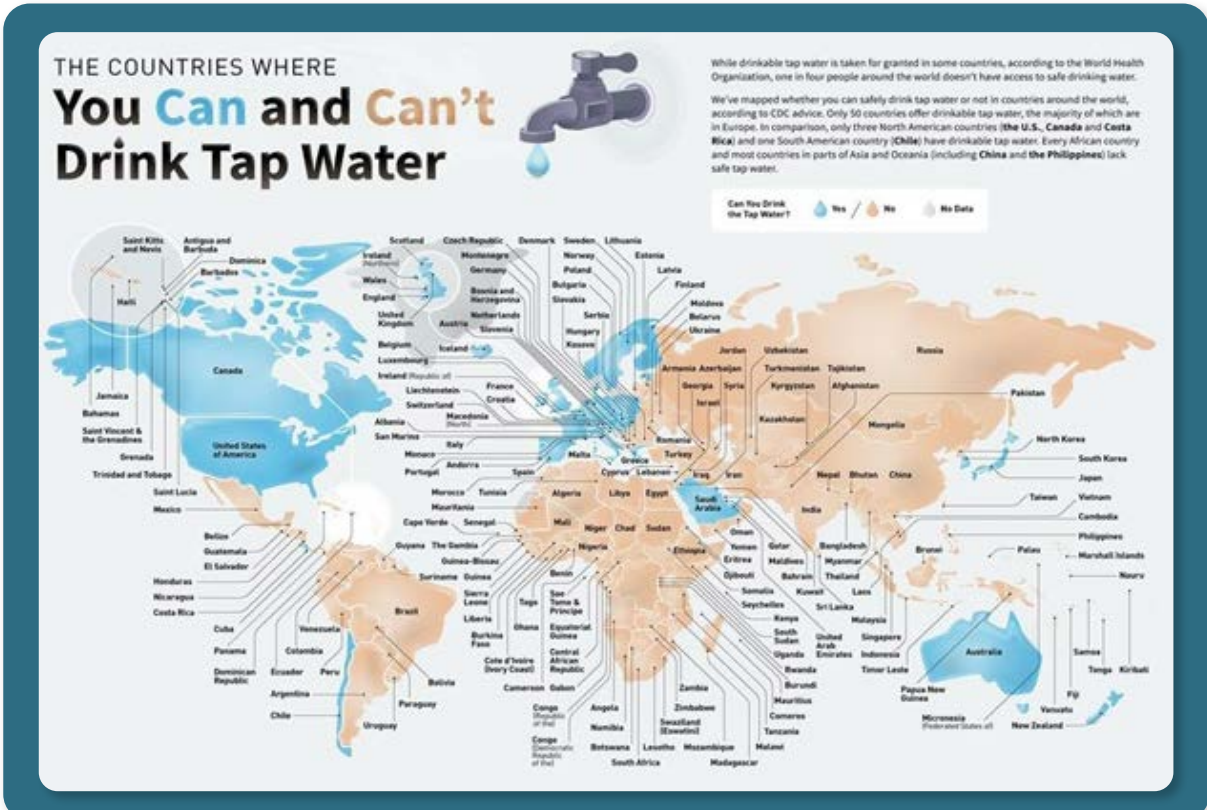
An article in LinkedIn by A.Hassan.



The article outlines on the effective ways in which you can judge if water is drinkable with the varying standards and factors that effect the quality of the water. It carries on outlining that Yale has completed a paper in scoring countries. It is A.Hassan's opinion that this paper is limited and doesn't include age of the infrastructure and the presence of toxins or contaminants.

So the lesson learn is to think when you are on your holidays. Please find this article and others as I have only offer a insight and follow - **Genesis Systems® (USA)**.

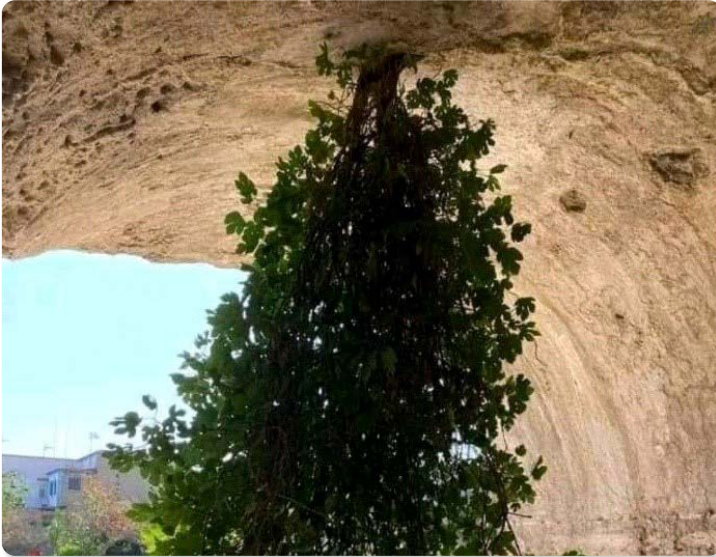
[View full article here](#)



SPOT THE MISTAKE

While browsing LinkedIn, I stumbled upon this image.

Mother Nature is amazing and will always find a way to survive.



INTERESTING AND BESPOKE



Be careful on holiday!

UPCOMING EVENTS

Save these dates

	Face to Face					Dinner
	Online CPD's	London & South East	Midlands	Northern	UAE	
	MA	AS	DS	MA	GT	
August		Thursday 17th August SoPHE Summer Networking Event 2023 Sky Pod Bar, 1, Sky Garden Walk, London EC3M 8AF 17:45 - 21:30 (SoPHE)				
September	Wednesday 27th September "How to Specify for Hospital Bldgs." Delabie UK Ltd	Wednesday 13th September "HW Plant selection and sizing" Paul Marsden Baxi Group Introba office at 5.30 to 6pm start 150 Holborn, Bloomsbury, Camden Town, London, EC1N 2NS Ecoprod Technique TEAMS CONNECTION LINK	Tuesday 26th September Jonathan Atkinson (GeorgFischer Ltd)	Wednesday 20th September Title TBC (ACV UK Ltd)	Thursday 28th September Roof Drainage system typology in compliance with local & international standards (BS/IPC/UPC/DM) - Part 2 Geberit Training Centre (Geberit)	
October	Tuesday 24th October (Online via MS Teams) Insights into sustainable innovation with PAM Building Richard Smith (PAM Building/Saint Gobain)	Wednesday 11th October Title TBC Introba office at 5.30 to 6pm Start 150 Holborn, Bloomsbury, Camden Town, London, EC1N 2NS Si Gobain PAMS TEAMS CONNECTION LINK				
November	Wednesday 22nd November (Online via MS Teams) Blue Roof Design (ACO Drainage)	Wednesday 8th November "Baterial and Legionella Control in domestic water networks" Introba office at 5.30 to 6pm start 150 Holborn, Bloomsbury, Camden Town, London, EC1N 2NS Akshay Lakhani TEAMS CONNECTION LINK	Wednesday 29th November Andrew Stokes-Roberts (Resideo UK Ltd)	Wednesday 15th November "Water Treatment in Commercial Heating Systems" Sentinel Performance Solutions Ltd	Friday 24th November Optimized pressure boosting system Online Webinar (Grundfos)	Thursday 2nd November SoPHE London Dinner Royal Lancaster Hotel



SoPHE SUMMER NETWORKING EVENT

Held at the iconic 'Walkie-Talkie' building, the event will be a much-needed opportunity for SoPHE members to network with other public health professionals, as well as Manufacturers and Contractors from the SoPHE Industrial Associate membership.

Drinks and canapes will be provided.

Registration will be on a first come first served basis so please book now to avoid disappointment.

DATE

17 August 2023

TIME

17:45

LOCATION

Sky Pod Bar,
London, EC3M 8AF



BOOK NOW
CLICK HERE

Since the last edition, the YEN have had our annual hands-on competition alongside the United Colleges Group. It was a fun packed day with 15 YEN members representatives from a range of consultancies.

Feedback on the day and since has been very positive and we hope to continue these days going forward.

We have had more conversations with contractors regarding site visits and other exciting opportunities with both the contractors working group and IWG for the future so please watch this space.

Our autumn aim is to have some technical evenings and conferences as well as a meet the Committee/ welcome to the industry event. More information surrounding the event will be available soon.

If you are interested in getting involved in the YEN Committee or would like to offer YEN a technical event or site visit please, reach out to one of our Committee or email sophe@cibse.org.

Picture taken at a recent SoPHE YEN Site visit



Volunteering for SoPHE is a great way to:

- Grow your network and meet new people
- Gain new skills and boost your CV
- Represent your industry
- Shape and influence the work that SoPHE does

Joe Russel,
SoPHE YEN Chair

>50 YEARS LONG LIFETIME

100% CAN BE SEPARATED AND REUSED

90% CAN BE MELTED DOWN AGAIN TO PRODUCE NEW STAINLESS STEEL

0% NO INCINERATION AS THE PRODUCT CAN BE RECYCLED

0% NO LANDFILL DISPOSAL OR DUMPING

BLÜCHER®
A WATTS Brand

SILVER 2022 ecovadis Sustainability Rating

SoPHE HIGH – RISE DRAINAGE VENTILATION WORKSHOP REPORT

The afternoon of Thursday 22nd June saw the SoPHE Technical Committee run a half day technical workshop on High Rise Drainage Ventilation Design at the IET in Savoy Place, London.

This was a follow on event from the first workshop, held back in 2019, which was organised to help the committee scope out the likely content for a SoPHE Technical Bulletin. This year's workshop was to update everybody on the progress to date.

The first half of the workshop was presented by Professor Michael Gormley of Heriot Watt University and updated us on the progress of their Air Flow Assessment Research Project, which is being funded by Aliaxis Group. Much of this work is being informed from data collected from the Aliaxis High Rise Research Centre at Northampton and Michael talked about the key parameters impacting on high-rise drainage ventilation systems. The data from Northampton is allowing the University to fine tune their AIRNET drainage ventilation simulation. This allows them to accurately model a variety of systems to provide data over a wide range of building heights, flows and pipework arrangements.

The second speaker was Bas Nolta from Aliaxis High Rise Building Solutions, who presented a 'proof of concept' version of their Drainage Ventilation Validation Tool. The idea behind this tool is to have a cloud based application that allows the engineer to describe their proposed system in terms of height, flows and pipework size etc. The application then finds the closest AIRNET model to this system and outputs a 'traffic light' green, amber, or red risk of the drainage ventilation being adequate for a variety of venting arrangements, dependant upon what design code is being applied. Bas explained that the next stage of development of the tool is to beta test it internally at Aliaxis.



The workshop was closed by Jassim Daureawo, the Technical Committee chair, who asked the audience a series of questions via Slido about what information they would like to see in the technical bulletin and how it should be presented. There will be more from Jassim on this subject, in a future edition of this newsletter, once these audience responses have been processed.

**Peter White,
CEng MCIBSE FSOPHE,
SoPHE Chair,
Director,
PHDC**

Why not transfer to the grade that reflects your experience and knowledge?

In the time since I became SoPHE Chair, our membership numbers have remained steady, and the table below shows the current numbers by grade.

SoPHE Affiliate: 361
SoPHE Associate Member: 29
SoPHE Fellow: 16
SoPHE Honorary Fellow: 14
SoPHE Member: 102
SoPHE Student: 474
Total: 996



Later this year, we are planning to run a membership drive on social media to see if we can actually increase our membership, rather than just maintain numbers around a thousand people. But, looking at the numbers of people in the Affiliate grade in particular, I am sure that many of you would meet our criteria for either Associate or Member. Likewise, I am certain that many of our Members would be recognised as Fellows if they went through the transfer process.

In both cases, if you have been working as a public health engineer for a while, then getting the appropriate membership is a straightforward way of telling those around you that your knowledge and experience has been recognised by your fellow PH specialists.

Now, if it is only apathy that is stopping you from undertaking the transfer procedure, then that is understandable, we all live busy lives (for full disclosure I have been meaning to transfer from MCIBSE to FCIBSE for several years and still haven't done it). However, if it is because you are uncertain that your experience is good enough, then you can always get in touch with me for a quick chat or contact sophe@cibse.org.

The transfer process itself is really easy. Just fill in this [short application form](#), send it to sophe@cibse.org and have a 30-60 minute Microsoft Teams call with me and Chris Northey one evening, and that's it.

Peter White,
SoPHE Chair

HEATRAESADIA
QUALITY
RELIABILITY
KIWA
APPROVED
EFFICIENCY
SUPPORT
FLEXIBLE
EXPERT OF PARTS
ENERGY SAVING
MULTIPoint
CE MARKED
IPX4
RATED
UK MANUFACTURE
UK HELP LINE
COMPLIANT
BAXI

THINK QUALITY, RECEIVE MORE.

heatraesadia.com/think

HEATRAESADIA



SoPHE NORTHERN DINNER REPORT

Friday 12th May 2023

The 11th SoPHE Northern Dinner took place, once again, at the Midland Hotel Manchester, on Friday 12th May 2023.

It was held in the Trafford Suite, starting with pre-dinner drinks where colleagues & guests alike could mingle and meet-up with both “old” and new friends. This year, we deviated from tradition, with the names of the tables roughly based upon ‘plumbing aspects’. For entertainment, we welcomed Naomi Cooper, a ‘sharp storyteller’ who has performed across Europe & who was a finalist in the Funny Women Stage Awards in 2020.

Our Chair, Peter White, started the proceedings off by informing everyone as to the progress made by SoPHE, the latest number of individual members and Industrial Associate members. He thanked all the Regional Secretaries for their hard work and dedication.

During the evening, a table quiz took place in which a number of comedy and comedian related questions were asked; a tie-break between the top 4 tables involved 4 “players” from those tables to sing the signature tune from ‘The Vicar of Dibley’. Sadly, no-one did, but because of the sheer effort of actually singing something, the award was still given to a vocal table.

Paul Marsden, SoPHE Industrial Associate Chair, concluded the evening by thanking everyone present & especially the respective table sponsors for their continuing support.

The event was a chance to thank Roisin Sweeney, CIBSE Head of Membership Engagements and Networks who is moving on to pastures new. SoPHE would like to thank Roisin for all of her hard work, time and effort that she has given the Society over the years. SoPHE Northern would like to take this opportunity to thank everyone involved for their support in this dinner; the next one – our 12th – will be held on Friday 10th May 2024; hope to see you there.

**Malcolm Atherton,
SoPHE North West Representative and Global CPD Coordinator,
Director,
Water Consultants LTD.**

SoPHE ANNUAL PLUMBING COMPETITION

A Huge Success!

Friday 16th of June saw the return of the annual Plumbing Centre of Excellence/ Young Engineers Network Plumbing Competition at the College of North West London.

The purpose behind the competition is to bridge the gap in students' learning from domestic to commercial installations. SoPHE's young engineers competed with and alongside college students in plumbing problem solving, hand skills and practical fault finding of plumbing installations.

The event is supported by manufacturers and contractors from the SoPHE Industrial Associate membership, who provide tasks and materials for the competitors which included fault finding



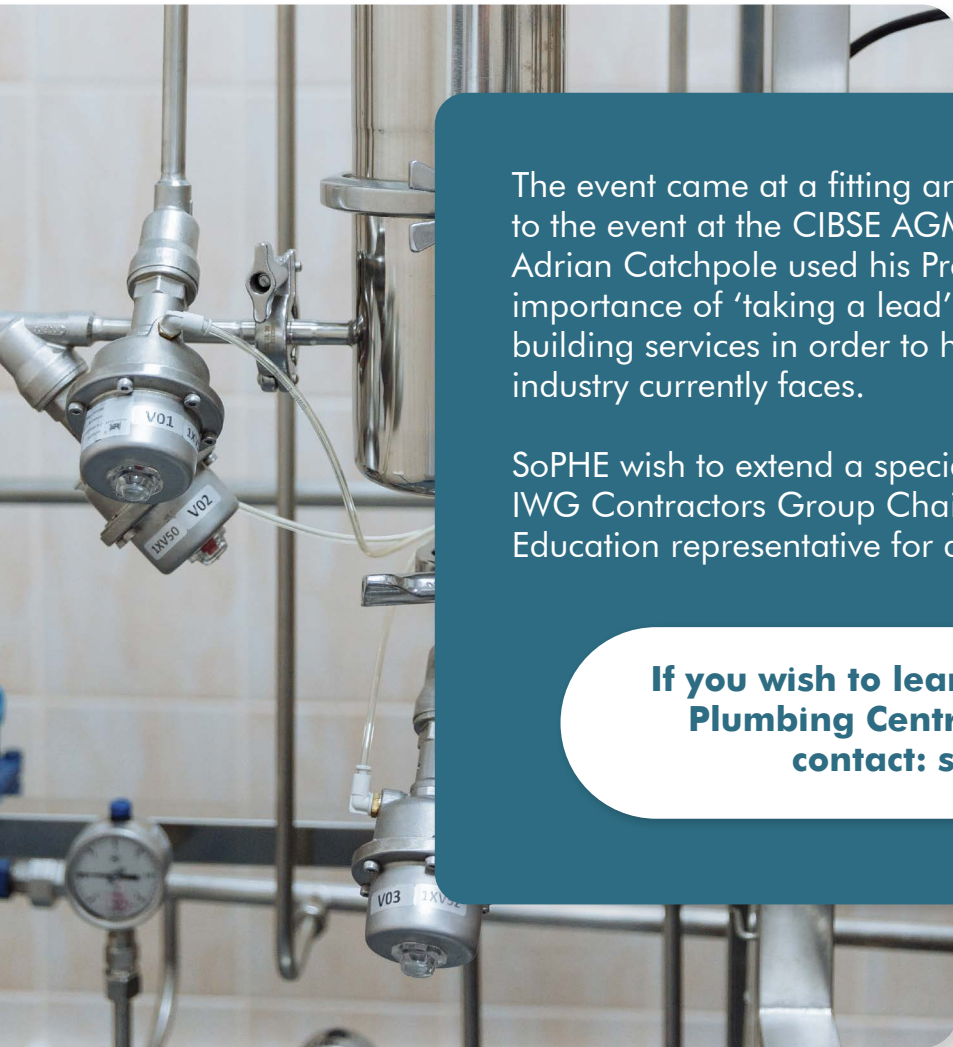
boards as well as a material take off challenge. As with all SoPHE activity, without the support of Industrial Associates, the event would not be able to take place. The Plumbing Competition exemplifies the sheer amount of collaboration that SoPHE partake in. The monumental success of the day was a joint effort between SoPHE, SoPHE Industrial Associates, SoPHE YEN, United Colleges Group and CIBSE staff.

The SoPHE: PCE/ YEN Plumbing Competition is the PCE's annual flagship event. The day saw over 34 young engineers and students competing against each other. It is a great opportunity for both students and engineers to learn from each other and offers students an insight into different career paths.

The competition winners will be announced at this years SoPHE London Dinner in November, along side the The Chris Sneath Bursary and SoPHE Honorary Fellow award. The event is attended by over 350 professionals from across public health and is a great opportunity to celebrate the industry.

Peter White, SoPHE Chair stated, 'it's fantastic to see this event getting better and better each year with great support from everyone involved'.

The SoPHE Plumbing Centre of Excellence has gone from strength to strength this year. They have been able to provide a wealth of in person and virtual CPD sessions including, for the first time ever, four simultaneous Plumbing Skills Competition's across different college campuses in London on the same day.



The event came at a fitting and important time. Two days prior to the event at the CIBSE AGM, newly elected CIBSE President Adrian Catchpole used his Presidential Address to emphasise the importance of 'taking a lead' in attracting new young engineers to building services in order to help combat the challenges that the industry currently faces.

SoPHE wish to extend a special thanks to Sanjay Modasia, SoPHE IWG Contractors Group Chair and Sam Burgess, SoPHE IWG Education representative for all their hard work behind the scenes.

If you wish to learn more about the SoPHE Plumbing Centre of Excellence, please contact: sophe@cibse.org.



The way to the future — the digital water management solution

As we become more focused on water conservation and sustainability, the use of digital technologies to manage our water systems will become increasingly important. The ever-present risk of legionella growth demands that our water systems are monitored and managed in a way that will reduce the effects of poor circulation and temperature control.

The valves have been developed to not only fulfil the monitoring requirements of HSG274 and HTM04-01. They use a data and automate a control function, such as hydronic balancing or flushing.

Hydronic Balancing of Circulating Systems

Where wholesome hot and cold-water services have been installed, the valve will automatically adjust flows to maintain perfect system balance. By utilising temperature and/or flow sensors on the system, flow regulating valves are automatically adjusted to maintain system balance. This allows for automated commissioning of the system at build stage and throughout its operational life. Should the system parameters require alteration, the target temperature / flow rates can be adjusted from anywhere in the world.

Smart automated flushing

The design parameter of these valves includes digital flushing valves. These can be installed on a static water run outs and scheduled to flush a volume of water to drain to prevent stagnation

occurring. This could be of particular use in high rise developments, where occupancy of all apartments is not always guaranteed. Flow sensors can be installed on the supplies to each apartment to record usage, and where no flow has been detected, a volume of water is flushed to drain. This helps to maintain water quality to the residents occupying the building, and alleviates the burden placed on building owners / managers to manually flush systems.

Communications

Manufacturers can offer platform that allow for remote access to the system from anywhere in the world. These allow for accessing the data collected from the sensors and adjusting operational parameters. This also allows for the system to issue alerts should control parameters be exceeded, incorporated into these signals through BACnet or REST API connectivity. This gives the end user the freedom to utilise the system and access the data via their preferred platform.

Automated maintenance

With operations with a hydronic balancing valves operating digitally, automated valve exercising is

programmed to take place weekly. This helps to prevent valve seizure, scale formation and a build-up of debris within the valve.

Where thermal disinfection is utilised on hot water systems, helps to deliver a robust process. The development of such valves offer a comprehensive report that produced to evidence the effectiveness of the disinfection and limits time spent on site taking readings in person. Such valves with the above parameters have been developed by such manufacturers as Georg Fischer and the Hycleen range as below image.

Andrew Arnold
Specification Manager
Georg Fischer Sales Ltd

